

PRICE LIST COLUMBIA VEHICLES.

NET F. O. B. CARS FACTORY.

Mark XII.	Runabout, wire wheels.....	Radius, 40 miles.....	\$ 700.00
" XII.	Runabout, wooden wheels.....	" 40 "	750.00
" XII.	Victoria, wire wheels.....	" 40 "	800.00
" XII.	Victoria, wooden wheels.....	" 40 "	850.00
" III.	Phaeton.....	" 40 "	1,200.00
" XIX.	Surrey.....	" 40 "	1,200.00
" XIX.	Cabriolet.....	" 40 "	1,600.00
" XIX.	Rear Boot Victoria.....	" 40 "	1,600.00
" XI.	Six Passenger Bus.....	" 35 "	1,400.00
" XI.	Eight Passenger Bus.....	" 35 "	1,500.00
" XI.	Wagonette.....	" 35 "	1,800.00
" XVI.	Straight Front Brougham	} Prices given upon application.	
" XVI.	Extension Front Brougham		
" XVII.	Hansom		
" XI.	Delivery Wagon (1,000 lb. capacity),	Radius, 35 miles.....	1,400.00
" XIX.	Delivery Wagon (600 lb. capacity),	" 35 "	1,200.00
" VIII.	Gasolene Runabout, 150 miles radius on one supply of gasolene.		1,500.00
" VII.	Gasoline Tricycle Carrier	} Prices given upon application.	
" VII.	Gasoline Jaunting Car		

At above prices all vehicles are equipped with **LONG DISTANCE**, i. e., **"EXIDE" BATTERIES**, manufactured by the Electric Storage Battery Company of Philadelphia, Pa.

This battery is we believe superior to all others now on the market, excelling in **CAPACITY** and **DURABILITY**, and gives to the above listed vehicles the radius noted.

PRICE LIST COLUMBIAN EXHIBITION

THE LITTLE BOOK OF THE

EXHIBITION

THE LITTLE BOOK OF THE COLUMBIAN EXHIBITION
CONTAINS A COMPLETE LIST OF THE ARTICLES
OFFERED FOR SALE AT THE EXHIBITION
AND THE PRICES AT WHICH THEY WILL BE
OFFERED FOR SALE.

BOND

THE LITTLE BOOK OF THE COLUMBIAN EXHIBITION
CONTAINS A COMPLETE LIST OF THE ARTICLES
OFFERED FOR SALE AT THE EXHIBITION
AND THE PRICES AT WHICH THEY WILL BE
OFFERED FOR SALE.

THE LITTLE BOOK OF THE COLUMBIAN EXHIBITION
CONTAINS A COMPLETE LIST OF THE ARTICLES
OFFERED FOR SALE AT THE EXHIBITION
AND THE PRICES AT WHICH THEY WILL BE
OFFERED FOR SALE.

THE LITTLE BOOK OF THE COLUMBIAN EXHIBITION
CONTAINS A COMPLETE LIST OF THE ARTICLES
OFFERED FOR SALE AT THE EXHIBITION
AND THE PRICES AT WHICH THEY WILL BE
OFFERED FOR SALE.

THE LITTLE BOOK OF THE COLUMBIAN EXHIBITION
CONTAINS A COMPLETE LIST OF THE ARTICLES
OFFERED FOR SALE AT THE EXHIBITION
AND THE PRICES AT WHICH THEY WILL BE
OFFERED FOR SALE.

THE LITTLE BOOK OF THE COLUMBIAN EXHIBITION
CONTAINS A COMPLETE LIST OF THE ARTICLES
OFFERED FOR SALE AT THE EXHIBITION
AND THE PRICES AT WHICH THEY WILL BE
OFFERED FOR SALE.



Hand
Forge
Shop



Power
Forge
Shop



Electric Vehicle Company

**Columbia
Automobiles
Electric & Gasolene**

Surreys, Omnibuses, Wagonettes,
Delivery Wagons, Runabouts
(Electric and Gasolene),
Broughams, Hansoms,
Phaetons, Cabriolets,
Victorias, Landaus, Opera
Buses and Gasolene
Tricycle Carriers

Operating and Selling Companies

State of New York: New York Electric Vehicle Transportation Co., Sales and Showrooms, 541 Fifth Avenue, New York City.

State of Pennsylvania: Pennsylvania Electric Vehicle Co., 250-256 N. Broad Street, Philadelphia.

State of Illinois: Illinois Electric Vehicle Transportation Co., 173 Michigan Avenue, Chicago, Ill.

New England States: New England Electric Vehicle Transportation Co., 541 Tremont Street, Boston, Mass.

District of Columbia: Washington Electric Vehicle Transportation Co., Panorama Building, 13th St. and Ohio Ave., Washington.

State of New Jersey: New Jersey Electric Vehicle Transportation Co., 100 Broadway, New York.

California Office: Parrott Building, Market Street, San Francisco, Cal.

European Office: 54 Avenue Montaigne, Paris, France.

Mexico: Mexican Electric Vehicle Co., Juan de Lathan No. 7, Mexico City, Mexico.

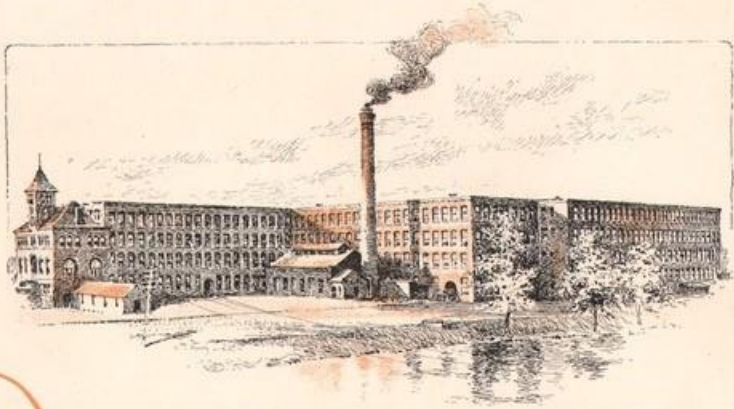
In territory not represented by local companies, all communications should be addressed to

Electric Vehicle Company,
100 Broadway, New York, U. S. A.

Wheel
Room



The vehicles described and illustrated in the following pages have been thoroughly tested in actual service. They embody the lessons we have been able to learn from having a large number steadily in commission in the hands of our customers for five years, as well as the results of our own testing, experiment and observation here and abroad. Our



Wood-working
Shop



claim for the reliable qualities and the superiority of our automobiles is based on the work they have done and the results they have given.

We have built and shipped to our customers a greater number of electric vehicles than produced to date by all the other firms in this country. We occupy nine acres of floor space, and employ in



our different factories alone over seventeen hundred men working exclusively on automobiles. Our business has been established and our factory in operation for five years and is now the most completely equipped automobile plant in the world. The engineers and experts in our employ have, therefore, had an experience more thorough and com-



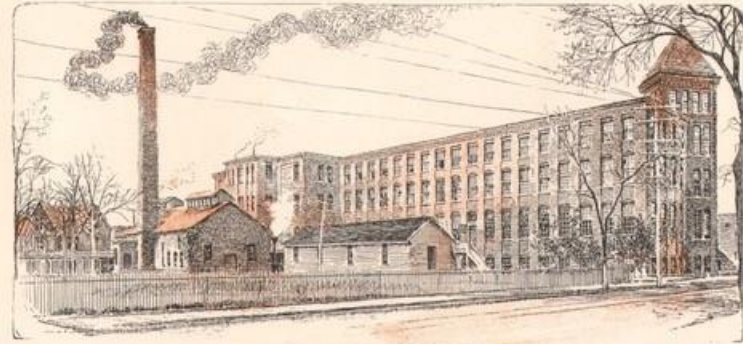
Assembling
Room



Forge Shop



prehensive, steadily in the same line, than could be obtained elsewhere. Five years is a long period in the automobile industry in this country, and few of those, besides ourselves, engaged therein to-day have had their factories in operation for one-half that period. We believe accordingly that we hold an unequalled advantage from the point



of view of the purchaser who desires nothing but what has been thoroughly tried and tested, on account of our long and practical experience.

In this catalogue the mileage as given for each electric automobile is that available on one charge of the battery which is supplied as standard. Where conditions justify, however, we are pre-



Rubbing Stand



Assembling
Room



pared to furnish, if specified, for vehicles of the pleasure class, special batteries designed for long-distance work, from which considerably greater mileage can be obtained. Full information in regard to these and other classes of batteries will be furnished upon application.



Columbia III Columbia Phaeton

Mileage capacity on one charge, equipped with standard battery: ~~30~~ 40

Maximum speed, equipped with standard battery: 12 miles per hour.

Carrying capacity: 2 passengers and attendant.

Tires: 3-inch, pneumatic.

Wheels: wooden; front 32 inches diameter, rear 36 inches diameter.

Alternative and long-distance batteries for this vehicle can be supplied. Information will be furnished upon application.



Model XII Columbia Runabout

Mileage capacity on one charge, equipped with standard battery: ~~20~~ 40
Maximum speed, equipped with standard battery 15 miles per hour.
Carrying capacity: 2 occupants.
Tires: 3-inch, pneumatic.
Wheels: wire; 28 inches diameter.

This Runabout can be provided with a top, when specified at an extra charge.
Alternative and long-distance batteries for this vehicle can be supplied. Information will be furnished upon application.



Model XII Columbia Victoria

Mileage capacity on one charge, equipped with standard battery: ~~20~~ 40
Maximum speed, equipped with standard battery: 15 miles per hour.
Carrying capacity: 2 occupants.
Tires: 3-inch, pneumatic.
Wheels: wire; 28 inches diameter.

Alternative and long-distance batteries for this vehicle can be supplied. Information will be furnished upon application.



Model XII Columbia Victoria with Hood

Mileage capacity on one charge, equipped with standard battery: ~~25~~ 40

Maximum speed, equipped with standard battery: 15 miles per hour.

Carrying capacity: 2 occupants.

Tires: 3-inch, pneumatic.

Wheels: wire; 28 inches diameter.

This Victoria can be provided with a hood, as shown in the illustration, or with an English canopy top, when specified, at an extra charge.

Alternative and long-distance batteries for this vehicle can be supplied. Information will be furnished upon application.



Model VI Columbia Victoria with Daumon

Mileage capacity on one charge, equipped with standard battery: 25.

Maximum speed, equipped with standard battery: 11 miles per hour.

Carrying capacity: 2 passengers, driver and attendant.

Tires: 3-inch, cushion pneumatic.

Wheels: wire; front 32 inches diameter, rear 36 inches diameter.



Cadark XIX Columbia Rear-boot Victoria

Mileage capacity on one charge, equipped with standard battery: ~~25~~ 40

Maximum speed, equipped with standard battery: 12 miles per hour.

Carrying capacity: 2 passengers, driver and attendant.

Tires: 3-inch, pneumatic.

Wheels: wooden; 32 inches diameter.

Alternative and long-distance batteries for this vehicle can be supplied. Information will be furnished upon application.



Cadark XIX Columbia Cabriolet

Mileage capacity on one charge, equipped with standard battery: ~~25~~ 40

Maximum speed, equipped with standard battery: 12 miles per hour.

Carrying capacity: 3 passengers, driver and attendant.

Tires: 3-inch, pneumatic.

Wheels: wooden; 32 inches diameter.

Alternative and long-distance batteries for this vehicle can be supplied. Information will be furnished upon application.



Dark XIX Columbia Surrey

Mileage capacity on one charge, equipped with standard battery: ~~25~~ 40
Maximum speed, equipped with standard battery: 12 miles per hour.
Carrying capacity: 4 occupants.
Tires: 3-inch, pneumatic.
Wheels: wooden; 32 inches diameter.

Alternative and long-distance batteries for this vehicle can be supplied. Information will be furnished upon application.

18



Dark VIII Columbia Gasolene Runabout

Mileage capacity on one filling of gasolene tank: 100.
Mileage capacity on one filling of water tank: 100.
Maximum speed: 20 miles per hour.
Carrying capacity: 2 passengers.
Tires: 3-inch, pneumatic.
Wheels: wooden; 28 inches diameter.

19



Model XI Columbia Brougham de Luxe

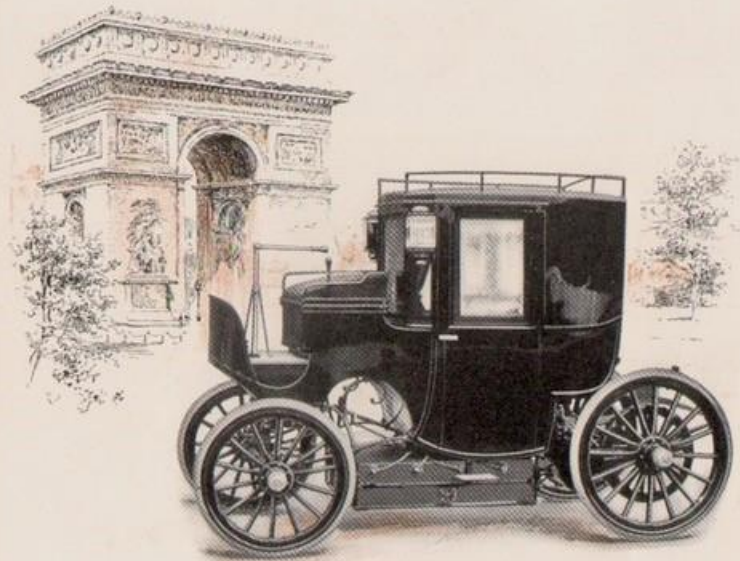
Mileage capacity on one charge, equipped with standard battery: 25.

Maximum speed, equipped with standard battery: 11 miles per hour.

Carrying capacity: 3 passengers, driver and attendant.

Tires: 2½-inch, solid rubber.

Wheels: wooden; front 36 inches diameter, rear 42 inches diameter.



Model XI Columbia Public Cab, with Underslung Battery

Mileage capacity on one charge, equipped with standard battery: 25.

Maximum speed, equipped with standard battery: 11 miles per hour.

Carrying capacity: 3 passengers, driver and attendant.

Tires: 2½-inch, solid rubber.

Wheels: wooden; front 36 inches diameter, rear 42 inches diameter.



Model XI Columbia Brougham de Luxe

Mileage capacity on one charge, equipped with standard battery: 25.
Maximum speed, equipped with standard battery: 11 miles per hour.
Carrying capacity: 3 passengers, driver and attendant.
Tires: 2 1/2 inch, solid rubber.
Wheels: wooden; front 36 inches diameter, rear 42 inches diameter.

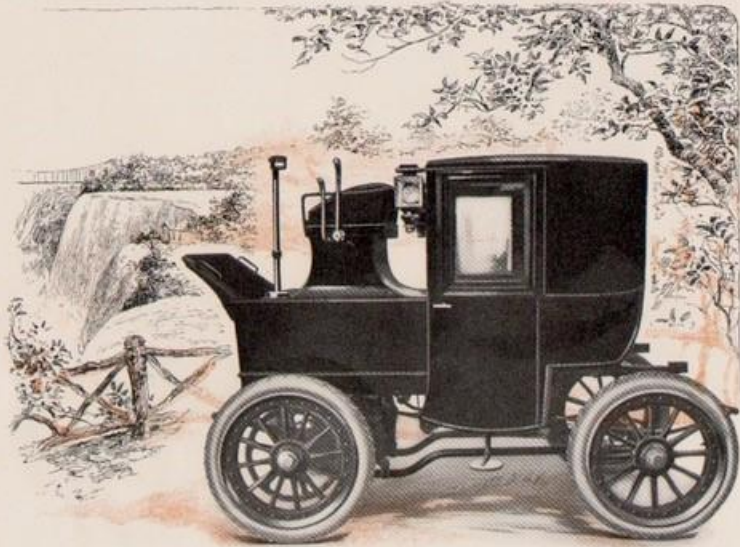
20



Model XVII Columbia Hanson

Mileage capacity on one charge, equipped with standard battery: 25.
Maximum speed, equipped with standard battery: 11 miles per hour.
Carrying capacity: 2 passengers and driver.
Tires: 4-inch, pneumatic.
Wheels: wooden; 36 inches diameter.

21



Model XVI Columbia Straight-front Brougham

This vehicle is also built with an extension front.
 Mileage capacity on one charge, equipped with standard battery: 25.
 Maximum speed, equipped with standard battery: 11 miles per hour.
 Carrying capacity: straight-front Brougham, 2 passengers inside, driver and attendant on front seat; extension-front Brougham, 4 passengers inside, driver and attendant on front seat.
 Tires: straight-front Brougham, 4-inch, pneumatic; extension-front Brougham, 5-inch, pneumatic.
 Wheels: wooden; 36 inches diameter.



Model XVII Columbia Hansom

Mileage capacity on one charge, equipped with standard battery: 25.
 Maximum speed, equipped with standard battery: 11 miles per hour.
 Carrying capacity: 2 passengers and driver.
 Tires: 4-inch, pneumatic.
 Wheels: wooden; 36 inches diameter.



Dark XI Columbia Six-passenger Omnibus

Mileage capacity on one charge, equipped with standard battery: 25.
Maximum speed, equipped with standard battery: 10 miles per hour.
Carrying capacity: 6 passengers inside, room on front seat for driver and one passenger.
Tires: 2½-inch, solid rubber.
Wheels: wooden; front 36 inches diameter, rear 42 inches diameter.

24



Dark XI Columbia Eight-passenger Omnibus

Mileage capacity on one charge, equipped with standard battery: 25.
Maximum speed, equipped with standard battery: 10 miles per hour.
Carrying capacity: 8 passengers inside, room on front seat for driver and one passenger.
Tires: 2½-inch, solid rubber.
Wheels: wooden; front 36 inches diameter, rear 42 inches diameter.

25



Columbia XI Columbia Wagonette

Mileage capacity on one charge, equipped with standard battery: 25.
 Maximum speed, equipped with standard battery: 10 miles per hour.
 Carrying capacity: 11 passengers and driver.
 Tires: 2½-inch, solid rubber.
 Wheels: wooden; front 36 inches diameter, rear 42 inches diameter.

26



Columbia VII Columbia Gasolene Tricycle Carrier

Mileage capacity on one filling of gasolene tank: 75.
 Mileage capacity on one filling of water tank: 20.
 Maximum speed: 12 miles per hour.
 Carrying capacity: 500 pounds of merchandise and driver.
 Tires: 2½-inch, pneumatic.
 Wheels: wire; 28 inches diameter.

Uncovered platforms for this vehicle, as shown in the illustration, can be supplied as an extra, if specified. Information will be furnished upon application.
 This vehicle, with Standard equipment, is shown on the following page.

27



Model VII Columbia Gasolene Tricycle Carrier

Mileage capacity on one filling of gasolene tank :
75.
Mileage capacity on one filling of water tank : 20.
Maximum speed : 12 miles per hour.
Carrying capacity : 500 pounds of merchandise
and driver.
Tires : 2 1/2-inch, pneumatic.
Wheels : wire ; 28 inches diameter.

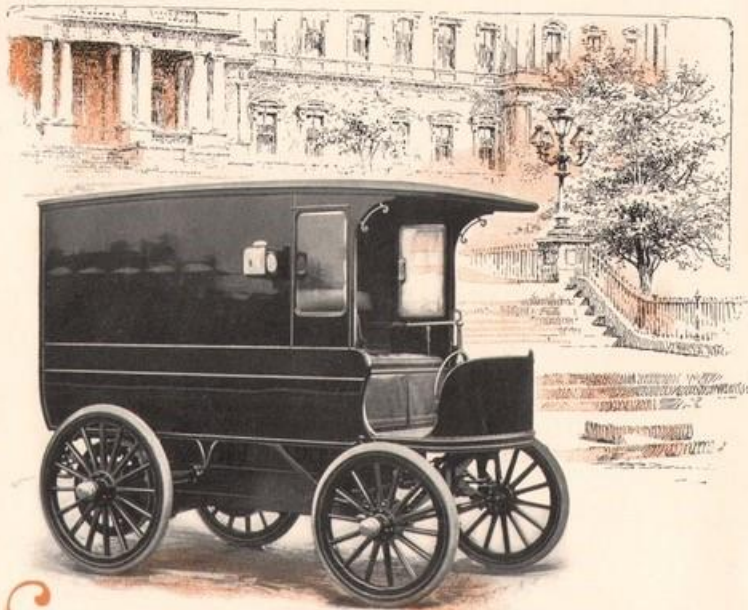
28



Model XIX Columbia Delivery Wagon

Mileage capacity on one charge, equipped with
standard battery : 25.
Maximum speed, equipped with standard battery:
11 miles per hour.
Carrying capacity : 600 pounds of merchandise,
driver and attendant.
Tires : 3-inch pneumatic.
Wheels : wooden ; 32 inches diameter.

29



Lark XI Columbia Delivery Wagon

Mileage capacity on one charge, equipped with standard battery: 25.
Maximum speed, equipped with standard battery: 11 miles per hour.
Carrying capacity: 1000 pounds of merchandise, driver and attendant.
Tires: 2½-inch, solid rubber.
Wheels: wooden; front 36 inches diameter, rear 42 inches diameter.