

1908

Baker  
Electric  
Vehicles



Baker  
Electric  
Vehicles  
©

# Baker Electric Vehicles

BAKER MOTOR VEHICLE  
COMPANY OF NEW YORK,  
— 1790 BROADWAY. —

# **Baker Electrics**

are the

## **Aristocrats of Motordom**

When conditions are indisputable they are facts. The searchlight of investigation will prove that behind the Baker electrics is capital, wide experience and the most modern factory in America.

The most refined adjectives are applicable to Baker construction and finish.

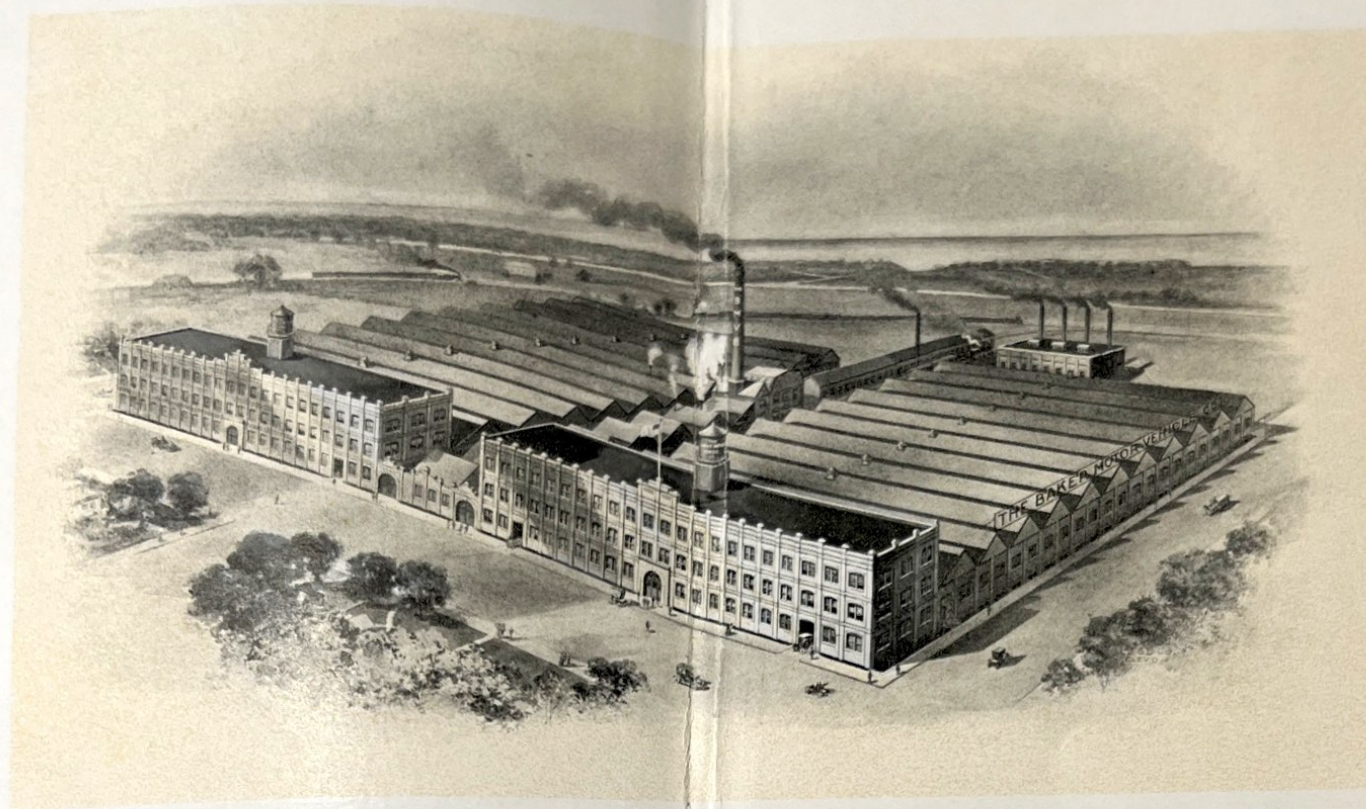
The Baker records of performances are unequaled. Baker quality is standard, and battery for battery, cell for cell, plate for plate, weight for weight, tire for tire, the Baker will give more speed and greater mileage than any other electric carriage made.

Baker electrics represent the concentrated convictions of the best experienced mechanical and electrical engineers. They are made on honor, sold on honor, and out of satisfaction given has grown a reputation to which we refer with just pride.

**The Baker Motor Vehicle Co.**

**Cleveland, Ohio**

**1908**



## **The Factory of The Baker Motor Vehicle Company**

**80th Street, N. W.**

**Cleveland, Ohio, U. S. A.**

This factory is the largest in America devoted exclusively to electric carriage manufacture. It is of the most modern and approved architecture—light, convenient, with an equipment of the most modern devices for superior manufacture. It is the third factory this company has been compelled to erect, hence it is not haphazard nor of meagre equipment, but the outgrowth of accumulated experience and a necessity, in the increasing

demand for Baker Electrics. It emphasizes demonstrated quality and a created confidence with the public that it is our purpose to perpetuate. The Baker Motor Vehicle Company's policy is to excel, and from the view point of factory facilities, leaves little to doubt as to results. To our dealers and our friends we open our doors with a cordial invitation for them to visit us and to investigate.



## Baker Queen Victoria

### L Chassis

A POPULAR DESIGN FOR GENERAL USE OR WOMAN'S DRIVING; ELEGANT IN EVERY DETAIL. IT HAS POWER, SPEED OR MILEAGE UNEQUALED BY SIMILAR CARS. IT IS NOISELESS, SPACIOUS, COMFORTABLE, ELEGANT, SAFE AND ABSOLUTELY FREE FROM LUBRICANTS.

*We follow the interests of the public by making every carriage as if it were for our own personal use. Our reputation is priceless. It represents honorable effort, enthusiastic work and faith in our product, nearly eight years of experience and unequalled mechanical and electrical engineering ability.*

## Baker Queen Victoria

- WHEEL BASE—70 inches.  
 WHEEL TREAD—56 inches.  
 WHEEL DIMENSION—30 inches.  
 TIRES, SIZE—30 x 3½ inches front and rear.  
 TIRES—Double tube, quick detachable.  
 FRAME—Pressed steel.  
 STEERING GEAR—Side lever.  
 BRAKES—Two foot brakes, one operating two external on rear wheels, the other operating two internal on rear wheels.  
 SPRINGS—Semi-elliptic in front, full elliptic in rear.  
 BATTERIES—24 cells, 9 M V.  
 MOTOR—Series wound, rated at 2 horse-power, 300 per cent. overload capacity.  
 CONTROLLER—Continuous torque system, speed changes without sparking, six speeds forward, three speeds reverse.  
 P. S.—Batteries at all speeds in series, four speeds forward without resistance, 12, 14, 16, 20 miles per hour.  
 TRANSMISSION—By silent chain reduction, single chain drive.  
 EFFICIENCY—Highest obtainable by the use of annular ball bearings on all revolving parts.  
 MILEAGE CAPACITY—Equal to or greater than any other electric carriage of similar type; mileage depending on speed and condition of road.  
 PAINTING—Body, black; panels, green or blue; gear, green or blue.  
 TRIMMING—Green or blue broadcloth.  
 TOP—Full Victoria or open.  
 PRICE—\$1,800, f. o. b. Cleveland, Ohio.

NOTE—Under the Queen Victoria and the inside driven Coupé, the chassis is precisely the same. We designate it as the "L" Chassis. These two bodies are positively interchangeable on this chassis.





### Baker Inside Driven Coupé

#### L Chassis

AN IDEAL INSIDE DRIVEN CARRIAGE AND A VEHICLE SEEMINGLY PERFECT FOR PHYSICIANS' USE. THIS COUPÉ BODY IS PLACED UPON WHAT IS KNOWN AS OUR "L" CHASSIS, AND IS ABSOLUTELY INTERCHANGEABLE WITH EITHER THE QUEEN VICTORIA OR RUNABOUT BODIES. THUS ANY ONE OWNING EITHER THE COUPÉ OR QUEEN VICTORIA CARRIAGE MAY PRACTICALLY HAVE TWO CARRIAGES IN THE PURCHASE OF AN EXTRA BODY.

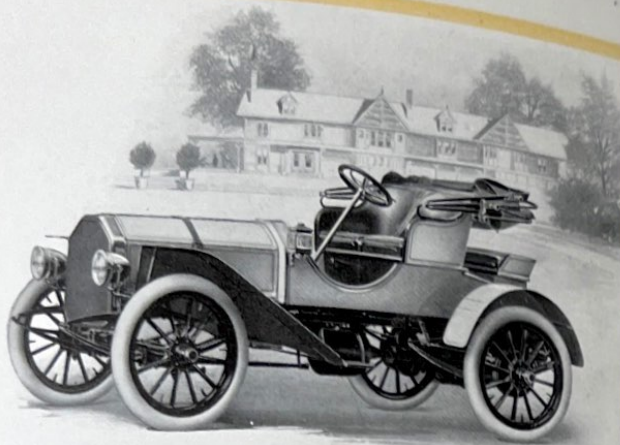
*Belief in the electric carriage is stronger with more advanced knowledge of the refinement in construction. Investigation develops high principles of manufacture, modern methods, unsurpassed facilities, class workmanship and the use only of correctly selected materials. These are features worth while studying. They are the foundation of Baker superiority.*

### Baker Inside Driven Coupé

- WHEEL BASE—70 inches.
- WHEEL TREAD—56 inches.
- WHEEL DIMENSION—30 inches.
- TIRES, SIZE—30 x 3½ inches front and rear.
- TIRES—Double tube, quick detachable.
- FRAME—Pressed steel.
- STEERING GEAR—Side lever.
- BRAKES—Two foot brakes, one operating two external on rear wheels, the other operating two internal on rear wheels.
- SPRINGS—Semi-elliptic in front, full elliptic in rear.
- BATTERIES—24 cells, 9 M V.
- MOTOR—Series wound, rated at 2 horse-power, 300 per cent. overload capacity.
- CONTROLLER—Continuous torque system, speed changes without sparking, six speeds forward, three speeds reverse.
- P. S.—Batteries at all speeds in series, four speeds forward without resistance, 12, 14, 16, 20 miles per hour.
- TRANSMISSION—By silent chain reduction, single chain drive.
- EFFICIENCY—Highest obtainable by the use of annular ball bearings on all revolving parts.
- MILEAGE CAPACITY—Equal to or greater than any other electric carriage of similar type; mileage depending on speed and condition of road.
- PAINTING—Body, black; panels, green or blue; gear, green or blue.
- TRIMMING—Green or blue broadcloth.
- PRICE—\$2,200, f. o. b. Cleveland, Ohio.

NOTE—Under the Queen Victoria and the inside driven Coupé, the chassis is precisely the same. We designate it as the "L" Chassis. These two bodies are positively interchangeable on this chassis.





### Baker Roadster

#### Model M

A NEW FEATURE IN ELECTRIC CARS; A SMART, RACY DESIGN WITH A LARGE BATTERY EQUIPMENT; A CAR WITH UNUSUAL SPEED WHEN REQUIRED, WITH ALL THE PRACTICAL NORMAL SPEEDS AS WELL. IT IS IN NO WAY A FREAK FOR STUNTS, BUT A ROADSTER FOR THE GENTLEMAN, A CAR EASILY CONTROLLED, ABSOLUTELY CLEAN AND DISTINCTIVELY ATTRACTIVE.

*We know of no facts that justify any other verdict than that the Bakers are the best. We keep in touch with all changes made by competitors and constantly sustain a live department of mechanical and electrical engineering. If you are looking for that which is new and practical in an electrical carriage you will find it in the Baker.*

### Baker Electric Roadster

- WHEEL BASE—95 inches.  
WHEEL TREAD—56 inches.  
WHEEL DIMENSION—34 inches.  
TIRES, SIZE—34 x 4 inches front and rear.  
TIRES—Double tube, quick detachable.  
FRAME—Armored wood.  
STEERING GEAR—Wheel.  
BRAKES—Two internal on rear axles, one internal on transmission shaft.  
SPRINGS—Semi-elliptic in front and rear.  
BATTERIES—40 cells, 9 P V.  
MOTOR—Series wound, rated at 3½ horse-power, 300 per cent. overload capacity.  
CONTROLLER—Continuous torque system, speed changes without sparking, nine speeds forward, three speeds reverse, operating lever on steering wheel.  
P. S.—Batteries to fifth speed, inclusive, in parallel, after fifth in series. Eight speeds forward without resistance, from 8 to 30 miles per hour.  
TRANSMISSION—Planetary gear reduction, shaft and bevel gear drive.  
EFFICIENCY—Highest obtainable by the use of ball bearings on all revolving parts.  
MILEAGE CAPACITY—70 miles, 15 miles per hour.  
PAINTING AND TRIMMING—Body, blue; running gear, yellow; upholstery, leather.  
PRICE—\$2,500, f. o. b. Cleveland, Ohio, with top and shock absorbers.





## Baker Brougham

### I Chassis

THE OWNERS OF HORSES REALIZE THEIR DANGER, UNCERTAINTY AND INCONVENIENCE. IN THE EVOLUTION OF THINGS WITHIN THE PRIVATE STABLE THE ELECTRIC BROUGHAM FINDS ITS PLACE. THE BAKER BROUGHAM IS THE MOST ELEGANT, ROOMY, RELIABLE AND ATTRACTIVE CARRIAGE YET PRODUCED.

*There are pilots in every port, pilots in the welfare of state and church, pilots in every line, pilots in electric carriage making. The Baker leads and is the mechanical and engineering pilot of electric carriage making. Imitation is sincere flattery. All we ask is credit for the impulse and stimulus that develop improvements and new ideas first found in the Baker.*

## Baker Electric Extension Front Brougham

- WHEEL BASE—89 inches.  
 WHEEL TREAD—56 inches.  
 WHEEL DIMENSION—34 inches.  
 TIRES, SIZE—34 x 4 inches front wheels, 34 x 4½ inches rear wheels.  
 TIRES—Double tube, quick detachable.  
 FRAME—Pressed steel.  
 STEERING GEAR—Wheel.  
 BRAKES—Two external on rear wheels operated by foot pedal, two internal brakes on rear wheels operated by hand lever.  
 SPRINGS—Semi-elliptic in front and rear.  
 BATTERIES—40 cells, 11 M V.  
 MOTOR—Series wound, rated at 6 horse-power, 300 per cent. overload capacity.  
 CONTROLLER—Continuous torque system, speed changes without sparking, six speeds forward, three speeds reverse, operating lever on steering wheel.  
 P. S.—Batteries at all speeds in series, four speeds forward without resistance, 12, 14, 16, 20 miles per hour.  
 TRANSMISSION—By silent chain reduction, shaft and bevel gear drive.  
 EFFICIENCY—Highest obtainable by the use of ball bearings on all revolving parts.  
 MILEAGE CAPACITY—12 miles per hour, 50 miles on single charge of battery. 16 miles per hour, 40 miles on single charge of battery.  
 PAINTING—Body, black; green, blue or maroon panels; gear, dark green, blue or maroon and striping.  
 TRIMMING—Dark green, blue or maroon broadcloth.  
 PRICE—\$4,000, f. o. b. Cleveland, Ohio.





### Baker Landulet

#### 4 Cycles

THE CYCLES OF DESIGN ARE THE SAME AS THE BROOKMAN. THE REAR SEAT OF THE 4-CYCLE MODEL CAN BE THROWN BACK, IMMEDIATELY CONVERTING IT TO AN OPEN TOP CAR. IN ITS OWN DESIGN IS THE WISDOM OF THE BEST RANGE OF VEHICLES.

*It is not possible to find that Baker electric cars are sold by the best dealers. It is natural that the best cars should have the best dealers. Sometimes we are in judgment as to whom we represent. If so, there is an opportunity for the sale of the Baker with the best dealer in any locality. We are open for advice and suggestion.*

### Baker Landulet

WHEELS: Four—40 inches.  
 WHEELS: Three—36 inches.  
 WHEELS: Two—32 inches.  
 TIRE: Solid rubber tires, 2 1/2 inches wide.  
 TIRE: Double rubber, split tread.  
 BRAKE: Friction.  
 STEERING: Four—Wheel.  
 BRAKE: Two external on rear wheels operated by foot pedal, two internal brakes on rear wheels operated by hand lever.  
 SWITCH: Semi-automatic.  
 BATTERY: 40 cells, 12 V.  
 MOTOR: Series wound, rated at 4 horse-power, 20 percent overload capacity.  
 CONTROLLER: Continuous torque system, speed change without stopping, six speeds forward, three speeds reverse, operating lever on steering wheel.  
 P. S. — Battery at all speeds in series for speeds forward without resistance, 12 to 14.5 miles per hour.  
 TRANSMISSION: By silent chain reduction, shaft and bevel gear drive.  
 EFFICIENCY: Highest obtainable by the use of ball bearings on all revolving parts.  
 RANGE: CAPACITY—20 miles per hour, 20 miles on single charge of battery. 10 miles per hour, 40 miles on single charge of battery.  
 PAINTING: Body, black, green, blue or maroon panels; gear, black green, blue or maroon and striping.  
 TRIMMING: Dark green, blue or maroon trimmings.  
 PRICE—\$400, 5 or 6 Cleveland, Ohio.



**Baker Coupé**

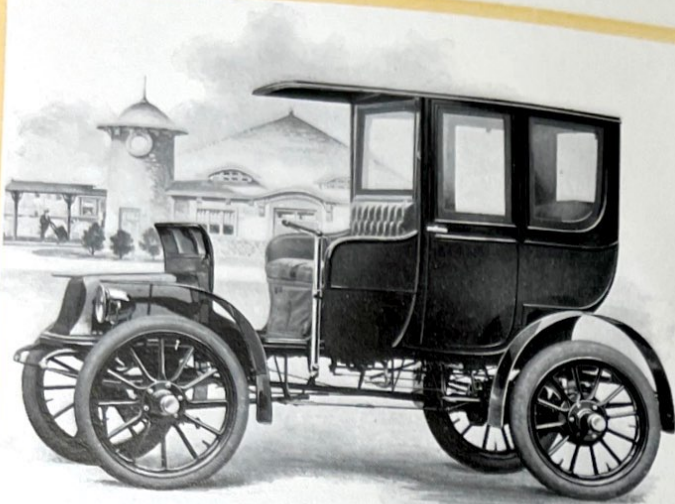
A REFINED TWO-PASSENGER, ENCLOSED VEHICLE, ESSENTIALLY A TOWN CARRIAGE OF BROUGHAM ELEGANCE. THERE IS CHARACTER IN ITS DESIGN FOR PRIVATE SERVICE, AND FOR CONVENIENCE, ELEGANT APPOINTMENTS AND SATISFACTORY SERVICE, IS WORTHY OF MOST CAREFUL EXAMINATION.

*It is an old saying "fine tools make fine workmen." Factory facilities, ample room, plenty of light, cleanliness, every feature of modern comfort and convenience for workmen are contributing features to high class work. The Baker factory is the largest and most modern in America devoted exclusively to electric carriage manufacturing.*

**Baker Coupé**

- WHEEL BASE—92½ inches.
- WHEEL TREAD—56 inches.
- WHEELS—Artillery, 36 inches.
- TIRES, SIZE—36 x 3½ inches front, 36 x 4½ inches rear.
- TIRES—Pneumatic, double tube.
- STEERING GEAR—Side lever.
- BRAKES—Two internal brakes on rear axle operated by foot lever, one internal brake on transmission shaft operated by controller lever.
- SPRINGS—Semi-elliptic front and rear.
- BATTERIES—28 cells, 9 P V.
- MOTOR—2½ horse-power, 300 per cent. overload capacity.
- TRANSMISSION—Silent chain reduction, shaft and bevel gear drive.
- EFFICIENCY—Highest obtainable by the use of ball bearings on all revolving parts.
- MILEAGE CAPACITY—40 miles on a single charge of the battery.
- PAINTING—Body, black; green, blue or maroon panels; wheels to match, with striping.
- TRIMMING—Green, blue or maroon broadcloth.
- PRICE—\$3,000, f. o. b. Cleveland, Ohio.





### Baker Depot Carriage

A POPULAR VEHICLE WHICH, WHEN COMPLETELY ENCLOSED, ANSWERS EVERY PURPOSE OF THE COUPÉ. THE FRONT PARTITION IS REMOVABLE AND ALL THE WINDOWS CAN BE LOWERED, AND WITH A SET OF LAZY BACK SEATS, WHICH ARE FURNISHED WITHOUT EXTRA CHARGE, THIS VEHICLE IS CONVERTIBLE TO AN IDEAL FAMILY CARRIAGE FOR FOUR PERSONS FOR SUMMER USE.

*We challenge comparison. Baker excellence is scientific superiority. The intelligent engineer, mechanical and electrical, needs only to examine to express essentially our claims for our cars. It will require no labor on his part to prove to himself the exceptional efficiency of Baker carriages. It is universally admitted Bakers are attractive.*

### Baker Depot Carriage

- WHEEL BASE—92½ inches.
- WHEEL TREAD—56 inches.
- WHEELS—Artillery, 36 inches.
- TIRES, SIZE—36 x 3½ inches front, 36 x 4½ inches rear.
- TIRES—Pneumatic, double tube.
- STEERING GEAR—Side lever.
- BRAKES—Two internal brakes on rear axle operated by foot lever, one internal brake on transmission shaft operated by controller lever.
- SPRINGS—Semi-elliptic front and rear.
- BATTERIES—28 cells, 9 P V.
- MOTOR—2½ horse-power, 300 per cent. overload capacity.
- TRANSMISSION—Silent chain reduction, shaft and bevel gear drive.
- EFFICIENCY—Highest obtainable by use of ball bearings on all revolving parts.
- MILEAGE CAPACITY—40 miles on a single charge of the battery.
- PAINTING—Body, black; green panels; wheels to match with striping.
- TRIMMING—Green broadcloth.
- PRICE—\$3,000.





### Baker Surrey

DIGNIFIED, DISTINCTIVE AND COMFORTABLE, EASY OF ACCESS, BROAD SEATS. ITS CAPE TOP AFFORDS PROTECTION FROM THE SUN'S RAYS WITHOUT OBSCURING THE VIEW. IN STORMY WEATHER IT MAY BE QUICKLY CONVERTED INTO AN ENCLOSED VEHICLE.

*If every buyer of an electric was an engineer, Baker quality would be clear to him. From the view point of mechanical intelligence there would be but little ground to do other than admire the Baker. The superior features of excellence are quickly revealed to the trained eye that appreciates quality.*

### Baker Surrey

- WHEEL BASE—86½ inches.
- WHEEL TREAD—56 inches.
- WHEELS—Artillery, 36 inches.
- TIRES, SIZE—36 x 3½ inches front, 36 x 4 inches rear.
- TIRES—Pneumatic, double tube.
- STEERING GEAR—Side lever.
- BRAKES—Two internal brakes on rear axle operated by foot lever, one internal brake on transmission shaft operated by controller lever.
- SPRINGS—Semi-elliptic front and rear.
- BATTERIES—28 cells, 9 P V.
- MOTOR—2½ horse-power, 300 per cent. overload capacity.
- TRANSMISSION—Silent chain reduction, shaft and bevel gear drive.
- EFFICIENCY—Highest obtainable by the use of ball bearings on all revolving parts.
- MILEAGE CAPACITY—40 miles on a single charge of the battery.
- PAINTING—Body, black; green or blue panels; wheels to match with striping.
- TRIMMING—Green or blue broadcloth.
- PRICE—\$2,650, with top.





### **Baker Suburban**

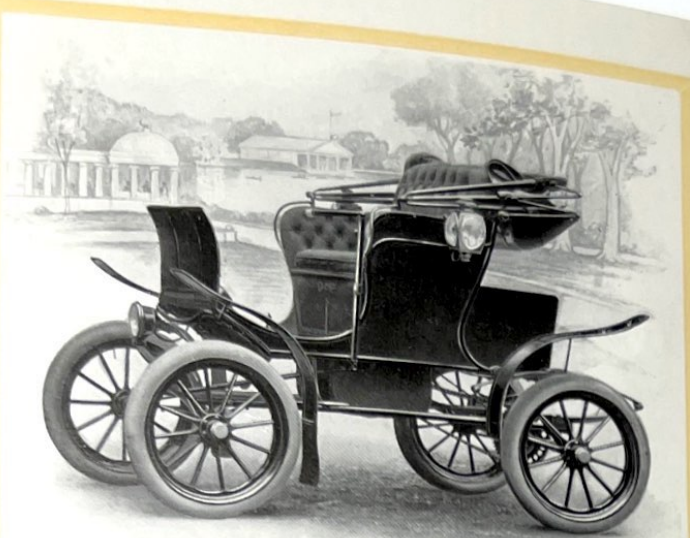
THE NAME IMPLIES ITS MISSION. THIS IS AN IDEAL CARRIAGE FOR COUNTRY CLUB SERVICE AND FOR THE GENTLEMAN WITH THE SUBURBAN HOME—A REAL COMPANION OF THE HIGH-POWERED CAR. ALWAYS READY, CLEAN, SERVICEABLE AND SAFE.

*Bakers are sterling. They are built for service and supply the users' wants day after day. Economical, satisfactory, excellent, they fulfill the present day requirements of the pleasure seeker and the needs of the business and professional man. There is a difference between that which is sterling and the indifferent.*

### **Baker Suburban**

WHEEL BASE—82 inches.  
 WHEEL TREAD—56 inches.  
 WHEELS—Artillery, 34 inches.  
 TIRES, SIZE—34 x 3½ inches front, 34 x 4 inches rear.  
 TIRES—Pneumatic, double tube.  
 STEERING GEAR—Side lever.  
 BRAKES—Two internal brakes on rear axle operated by foot lever, one internal brake on transmission shaft operated by controller lever.  
 SPRINGS—Semi-elliptic front and rear.  
 BATTERIES—28 cells, 11 P V.  
 MOTOR—2½ horse-power, 300 per cent. overload capacity.  
 TRANSMISSION—Planetary gear reduction, shaft and bevel gear drive.  
 EFFICIENCY—Highest obtainable by use of ball bearings on all revolving parts.  
 MILEAGE CAPACITY—50 miles on single charge of battery.  
 TOP—Open or Victoria.  
 PAINTING—Body, black, with red striped panel or silver gray; gear, red.  
 TRIMMING—Leather.  
 PRICE—\$2,000.

*B*



### Baker Stanhope

THE GROWING INDEPENDENCE OF WOMAN IS EMPHASIZED IN HER MANIPULATION OF THIS CARRIAGE. THE CONTROL IS SIMPLICITY ITSELF. THERE ARE MORE WOMEN DRIVERS OF BAKER STANHOPES IN THIS COUNTRY THAN OF ANY OTHER AUTOMOBILE MADE.

*Skilled and experienced mechanical and electrical engineers, having in mind the peculiar requirements essential to success, produce the best possible results. It is not what we say but what we demonstrate. Bakers have given users an unabridged measure of service for the past seven years. This is the true test of merit.*

### Baker Stanhope

WHEEL BASE—68 inches.  
WHEEL TREAD—48½ inches.  
WHEELS—Artillery, 30 inches.  
TIRES, SIZE—30 x 3½ inches.  
TIRES—Palmer.  
STEERING GEAR—Side lever.  
BRAKES—Two brakes, one operated by the controller lever handle which shuts off power and applies brake at same time, the other a foot brake on floor of carriage, a powerful friction acting on rear axle.  
SPRINGS—Full elliptic.  
BATTERY—14 cells, 9 M V.  
MOTOR—1¼ horse-power, 300 per cent. overload capacity.  
CONTROLLER—Non-sparking, three speeds forward and backward alike in efficiency.  
TRANSMISSION—Single chain drive.  
MILEAGE CAPACITY—40 miles on single charge of battery.  
PAINTING—Black body with green or blue panels.  
TRIMMING—Green or blue broadcloth.  
PRICE—\$1,600.

B



### Baker Imperial

THE EYE NEEDS NO INTERPRETER.  
THE REFINED ATTRACTIVENESS OF  
THIS CARRIAGE IS APPARENT. THEN  
ITS RELIABILITY AND WEARING  
QUALITIES HAVE BEEN DEMON-  
STRATED FOR THE PAST SEVEN  
YEARS.

*If the price of an electric carriage was involved in technical legal proceedings, you would employ the services of an attorney. Then may we ask, why not seek the advice of a competent mechanical and electrical engineer in the selection of your electric as well? However, there is one short cut, buy a Baker. It would be the unbiased advice of almost any mechanical expert.*

### Baker Imperial

WHEEL BASE—68 inches.

WHEEL TREAD—48½ inches.

WHEEL DIMENSION—30 inches.

TIRES, SIZE—30 x 3½ inches.

TIRES—Palmer.

STEERING GEAR—Side lever.

BRAKES—Two brakes, one operated by the controller lever handle which shuts off power and applies brake at the same time; the other a foot brake on floor of carriage, a powerful friction acting on rear axle.

SPRINGS—Full elliptic.

BATTERY—14 cells, 9 M V.

MOTOR—1¼ horse-power, 300 per cent. overload capacity.

CONTROLLER—Non-sparking, three speeds forward and backward alike in efficiency.

TRANSMISSION—Single chain drive.

MILEAGE CAPACITY—40 miles on single charge of battery.

PAINTING—Black body, with blue or green panels.

TRIMMING—Blue or green broadcloth or leather.

TOP—Open.

PRICE—\$1,200.



## Baker Electrics

**I**NSTRUCTIONS for running a Baker Electric Carriage are sent with each vehicle shipped. They are simple and require no mechanical knowledge or electrical experience. They can be learned in a very short time. The manipulation of a Baker is so simple that no one need fear to undertake it. The control is absolute even with the driver of slight experience. Practice makes one proficient and it is wonderful what can be done with the Baker Electrics.

Don't decide to purchase any electric car because it is advertised to do some wonderful stunt, even if it is guaranteed. We are among the oldest electric carriage manufacturers in this country. We rank with the most successful and lead in fine finish and efficiency. We are responsible, we have ripe experience, and unhesitatingly assure the intending purchaser that whatever any other electric carriage will perform, we can duplicate and even excel either in mileage or speed, and as for durable qualities, no car has stood the test of time better than the Baker. Bakers are at once a luxury and a utility. They have taken a place with the people that have used them as indispensable. They have earned a reputation that stands for superiority. The name Baker is synonymous with quality.

## National Association of Automobile Manufacturers, Inc.

### Standard Warranty

Adopted July 1st, 1907

**W**E WARRANT the motor vehicles manufactured by us for ninety days after the date of shipment, this warranty being limited to the furnishing at our factory of such parts of the motor vehicle as shall, under normal use and service, appear to us to have been defective in material or workmanship.

This warranty is limited to the shipment to the purchaser, without charge, except for transportation, of the part or parts intended to replace the part or parts claimed to have been defective, and which, upon their return to us at our factory for inspection, we shall have determined were defective, and provided the transportation charges for the parts so returned have been prepaid.

We make no warranty whatever in respect of tires, rims, radiators, coils or batteries.

The condition of this warranty is such that if the motor vehicle to which it applies is altered, or repaired outside of our factory, our liability under this warranty shall cease.

The purchaser understands and agrees that no warranty of the motor vehicle is made, or authorized to be made, by the company, other than that herein above set forth.



Chasmar-Winchell Press New York and Pittsburgh