

# Baker Electric Vehicles

FOSS-HUGHES MOTOR CAR CO.  
201 NORTH BROAD STREET,  
PHILADELPHIA AGENTS.

MKD 2500 EY969230

# **Baker Electric Vehicles**

✽  
**Baker Motor Vehicle Co.**  
Cleveland, Ohio  
1907

---

---

**Baker Electrics  
are the  
Aristocrats of Motordom**

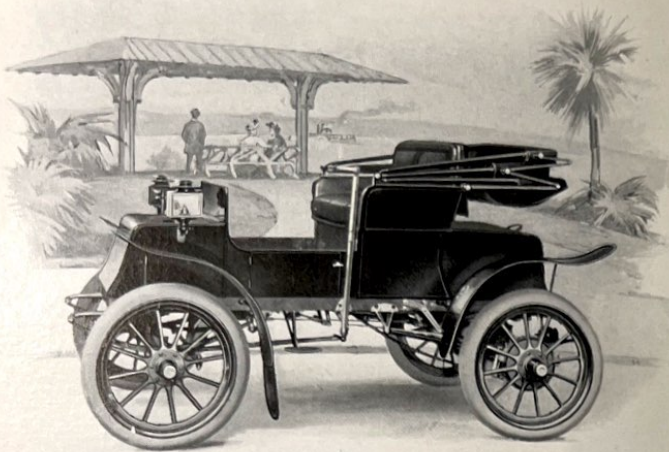
When conditions are indisputable they are facts. The searchlight of investigation will prove that behind the Baker electrics is capital, wide experience and the most modern factory in America.

The most refined adjectives are applicable to Baker construction and finish.

The Baker records of performances are unequalled. Baker quality is standard, and battery for battery, cell for cell, plate for plate, weight for weight, tire for tire, the Baker will give more speed and greater mileage than any other electric carriage made.

Baker electrics represent the concentrated convictions of the best experienced mechanical and electrical engineers. They are made on honor, sold on honor, and out of satisfaction given has grown a reputation to which we refer with just pride.

**The Baker Motor Vehicle Co.**



**Baker Runabout**

A SMART, NOVEL AND SERVICEABLE ALL AROUND CAR FOR PLEASURE RIDING OR BUSINESS USE; STRONG, SPEEDY, POWERFUL AND UP TO DATE IN EVERY DETAIL. IT HAS A GREATER MILEAGE IN ANY OF ITS VARIOUS SPEEDS THAN ANY OTHER ELECTRIC CAR CAN DEMONSTRATE WITH AN EQUIPMENT OF REGULAR STOCK BATTERIES AND TIRES.

**Baker Runabout**

- WHEEL BASE—70 inches.
- WHEEL TREAD—56 inches.
- WHEEL DIMENSION—30 inches.
- TIRES, SIZE—30 x 3½ inches front and rear.
- TIRES—Palmer standard, with option on leading clincher tires.
- FRAME—Armored wood.
- STEERING GEAR—Side lever.
- BRAKES—Two foot brakes, one operating two external on rear wheels, the other operating two internal on rear wheels.
- SPRINGS—Semi-elliptic in front, full in rear.
- BATTERIES—24 cells, 9 M V.
- MOTOR—Series wound, rated at 2 horse-power, 300 per cent. overload capacity. Continuous torque system, speed changes without sparking, six speeds forward, three speeds reverse.
- P. S.—Batteries at all speeds in series, four speeds forward without resistance, 13, 15, 17, 20 miles per hour.
- TRANSMISSION—By silent chain reduction, single chain drive.
- EFFICIENCY—Highest obtainable by the use of ball bearings on all revolving parts.
- MILEAGE CAPACITY—Equal to or greater than any other electric carriage of similar type.
- WEIGHT—1,500 pounds.
- PAINTING—Body, black; seat panels, red with black stripes; gear, red with black stripes.
- TRIMMING—Leather.
- TOP—Open.
- PRICE—\$1,800, f. o. b. Cleveland, Ohio.

NOTE—Under the Queen Victoria, the Runabout and the inside driven Coupé, the chassis is precisely the same. We designate it as the "L" Chassis. These three bodies are positively interchangeable on this chassis.



**Baker Queen Victoria**

A POPULAR DESIGN FOR GENERAL USE OR WOMAN'S DRIVING; ELEGANT IN EVERY DETAIL. IT HAS POWER, SPEED OR MILEAGE UNEQUALED BY SIMILAR CARS. IT IS NOISELESS, SPACIOUS, COMFORTABLE, ELEGANT, SAFE AND ABSOLUTELY FREE FROM LUBRICANTS.

**Baker Queen Victoria**

WHEEL BASE—70 inches.

WHEEL TREAD—56 inches.

WHEEL DIMENSION—30 inches.

TIRES, SIZE—30 x 3½ inches front and rear.

TIRES—Palmer standard, with option on leading clincher tires.

FRAME—Armored wood.

STEERING GEAR—Side lever.

BRAKES—Two foot brakes, one operating two external on rear wheels, the other operating two internal on rear wheels.

SPRINGS—Semi-elliptic in front, full in rear.

BATTERIES—24 cells, 9 M V.

MOTOR—Series wound, rated at 2 horse-power, 300 per cent. overload capacity.

CONTROLLER—Continuous torque system, speed changes without sparking, six speeds forward, three speeds reverse.

P. S.—Batteries at all speeds in series, four speeds forward without resistance, 13, 15, 17, 20 miles per hour.

TRANSMISSION—By silent chain reduction, single chain drive.

EFFICIENCY—Highest obtainable by the use of ball bearings on all revolving parts.

MILEAGE CAPACITY—Equal to or greater than any other electric carriage of similar type.

WEIGHT—1,500 pounds.

PAINTING—Body, black; panels, green or blue; gear, green or blue.

TRIMMING—Green or blue broadcloth.

TOP—Full Victoria.

PRICE—\$1,800, f. o. b. Cleveland, Ohio.

NOTE—Under the Queen Victoria, the Runabout and the inside driven Coupé, the chassis is precisely the same. We designate it as the "L" Chassis. These three bodies are positively interchangeable on this chassis.



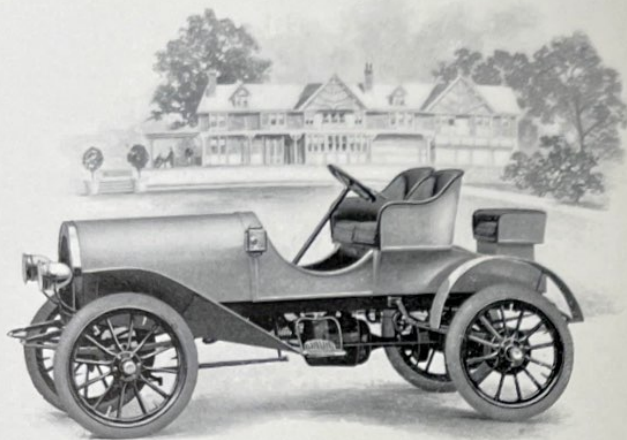
**Baker Inside Driven Coupé**

AN IDEAL INSIDE DRIVEN CARRIAGE AND A VEHICLE SEEMINGLY PERFECT FOR PHYSICIANS' USE. THIS COUPÉ BODY IS PLACED UPON WHAT IS KNOWN AS OUR "L" CHASSIS, AND IS ABSOLUTELY INTERCHANGEABLE WITH EITHER THE QUEEN VICTORIA OR RUNABOUT BODIES. THUS ANY ONE OWNING EITHER THE COUPÉ, QUEEN VICTORIA OR RUNABOUT CARRIAGE MAY PRACTICALLY HAVE TWO CARRIAGES IN THE PURCHASE OF AN EXTRA BODY.

**Baker Inside Driven Coupé**

- WHEEL BASE — 70 inches.  
WHEEL TREAD — 56 inches.  
WHEEL DIMENSION — 30 inches.  
TIRES, SIZE — 30 x 3½ inches front and rear.  
TIRES — Palmer standard, with option on leading clincher tires.  
FRAME — Armored wood.  
STEERING GEAR — Side lever.  
BRAKES — Two foot brakes, one operating two external on rear wheels, the other operating two internal on rear wheels.  
SPRINGS — Semi-elliptic in front, full in rear.  
BATTERIES — 24 cells, 9 M V.  
MOTOR — Series wound, rated at 2 horse-power, 300 per cent. overload capacity. Continuous torque system, speed changes without sparking, six speeds forward, three speeds reverse.  
P. S. — Batteries at all speeds in series, four speeds forward without resistance, 13, 15, 17, 20 miles per hour.  
TRANSMISSION — By silent chain reduction, single chain drive.  
EFFICIENCY — Highest obtainable by the use of ball bearings on all revolving parts.  
MILEAGE CAPACITY — Equal to or greater than any other electric carriage of similar type.  
WEIGHT — 1,650 pounds.  
PAINTING — Body, black; panels, green or blue; gear, green or blue.  
TRIMMING — Green or blue broadcloth.  
PRICE — \$2,000, f. o. b. Cleveland, Ohio.

NOTE — Under the Queen Victoria, the Runabout and the inside driven Coupé, the chassis is precisely the same. We designate it as the "L" Chassis. These three bodies are positively interchangeable on this chassis.



**Baker Roadster**

A NEW FEATURE IN ELECTRIC CARS; A SMART, RACY DESIGN WITH A LARGE BATTERY EQUIPMENT; A CAR WITH UNUSUAL SPEED WHEN REQUIRED, WITH ALL THE PRACTICAL NORMAL SPEEDS AS WELL. IT IS IN NO WAY A FREAK FOR STUNTS, BUT A ROADSTER FOR THE GENTLEMAN, A CAR EASILY CONTROLLED, ABSOLUTELY CLEAN AND DISTINCTIVELY ATTRACTIVE.

### **Baker Electric Roadster**

WHEEL BASE—95 inches.

WHEEL TREAD—56 inches.

WHEEL DIMENSION—34 inches.

TIRES, SIZE—34 x 3½ inches front, 34 x 4 inches rear.

TIRES—Pneumatic, optional any American clincher tire.

FRAME—Armored wood.

STEERING GEAR—Wheel.

BRAKES—Two internal on rear axles, one internal on transmission shaft.

SPRINGS—Semi-elliptic in front and rear.

BATTERIES—32 cells, 11 P V.

MOTOR—Series wound, rated at 3¼ horse-power, 300 per cent. overload capacity.

CONTROLLER—Continuous torque system, speed changes without sparking, six speeds forward, three speeds reverse, operating lever on steering wheel.

P. S.—Batteries at all speeds in series, four speeds forward without resistance, 14, 18, 24, 30 miles per hour.

TRANSMISSION—Planetary gear reduction, shaft and bevel gear drive.

EFFICIENCY—Highest obtainable by the use of ball bearings on all revolving parts.

MILEAGE CAPACITY—14 miles per hour, 60 miles on single charge of battery. 18 miles per hour, 50 miles on single charge of battery.

WEIGHT—2,400 pounds.

PAINTING AND TRIMMING—Body, gray; running gear, red; upholstery, red leather.

PRICE—\$2,250, f. o. b. Cleveland, Ohio.



**Baker Brougham**

THE OWNERS OF HORSES REALIZE THEIR DANGER, UNCERTAINTY AND INCONVENIENCE. IN THE EVOLUTION OF THINGS WITHIN THE PRIVATE STABLE THE ELECTRIC BROUGHAM FINDS ITS PLACE. THE BAKER BROUGHAM IS THE MOST ELEGANT, ROOMY, RELIABLE AND ATTRACTIVE CARRIAGE YET PRODUCED.

### **Baker Electric Extension Front Brougham**

- WHEEL BASE—89 inches.
- WHEEL TREAD—56 inches.
- WHEEL DIMENSION—34 inches.
- TIRES, SIZE—34 x 4 inches front wheels, 34 x 4½ inches rear wheels.
- TIRES—Pneumatic, optional foreign or American manufacture.
- FRAME—Pressed steel.
- STEERING GEAR—Wheel.
- BRAKES—Two external on rear wheels operated by foot pedal, two internal brakes on rear wheels operated by hand lever.
- SPRINGS—Semi-elliptic in front and rear.
- BATTERIES—40 cells, 11 M V.
- MOTOR—Series wound, rated at 5.9 horse-power, 300 per cent. overload capacity. Continuous torque system, speed changes without sparking, six speeds forward, three speeds reverse, operating lever on steering wheel.
- P. S.—Batteries at all speeds in series, four speeds forward without resistance, 12, 14, 16, 20 miles per hour.
- TRANSMISSION—By silent chain reduction, shaft and bevel gear drive.
- EFFICIENCY—Highest obtainable by the use of ball bearings on all revolving parts.
- MILEAGE CAPACITY—12 miles per hour, 50 miles on single charge of battery. 16 miles per hour, 40 miles on single charge of battery.
- PAINTING—Body, black; green, blue or maroon panels; gear, dark green, blue or maroon and striping.
- TRIMMING—Dark green, blue or maroon broadcloth or goatskin.
- WEIGHT—4,000 pounds.
- PRICE—\$4,000, f. o. b. Cleveland, Ohio.





### Baker Landaulet

THE LINES OF DESIGN ARE THE SAME AS THE BROUGHAM. THE REAR HALF OF TOP AND QUARTER CAN BE THROWN BACK, IMMEDIATELY CONVERTING IT TO AN ELEGANT OPEN CARRIAGE. IN ITS USE THERE IS THE WIDEST CORRECT RANGE OF SERVICE.

### Baker Landaulet

- WHEEL BASE—89 inches.
- WHEEL TREAD—56 inches.
- WHEEL DIMENSION—34 inches.
- TIRES, SIZE—34 x 4 inches front, 34 x 4½ inches rear.
- TIRES—Pneumatic, optional foreign or American manufacture.
- FRAME—Pressed steel.
- STEERING GEAR—Wheel.
- BRAKES—Two external on rear wheels operated by foot pedal, two internal brakes on rear wheels operated by hand lever.
- SPRINGS—Semi-elliptic in front and rear.
- BATTERIES—40 cells, 11 M V.
- MOTOR—Series wound, rated at 5.9 horse-power, 300 per cent. overload capacity. Continuous torque system, speed changes without sparking, six speeds forward, three speeds reverse, operating lever on steering wheel.
- P. S.—Batteries at all speeds in series, four speeds forward without resistance, 12, 14, 16, 20 miles per hour.
- TRANSMISSION—By silent chain reduction, shaft and bevel gear drive.
- EFFICIENCY—Highest obtainable by the use of ball bearings on all revolving parts.
- MILEAGE CAPACITY—12 miles per hour, 50 miles on single charge of battery. 16 miles per hour, 40 miles on single charge of battery.
- PAINTING—Body, black; green, blue or maroon panels; gear, dark green, blue or maroon and striping.
- TRIMMING—Dark green, blue or maroon broadcloth or goat skin.
- WEIGHT—4,000 pounds.
- PRICE—\$4,000, f. o. b. Cleveland, Ohio

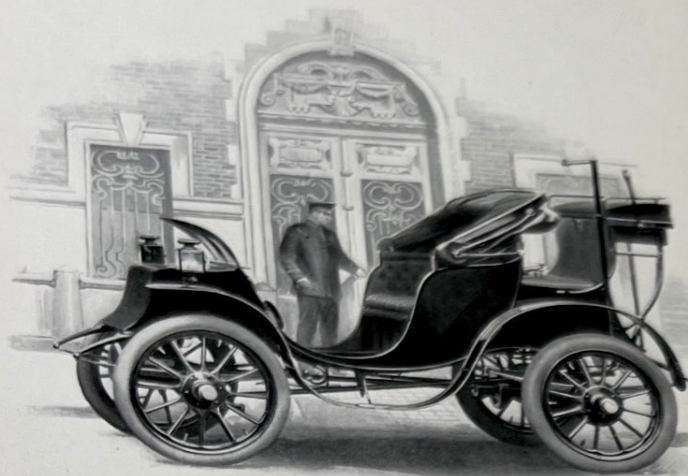


### **Baker Coupé**

A REFINED TWO-PASSENGER, ENCLOSED VEHICLE, ESSENTIALLY A TOWN CARRIAGE OF BROUGHAM ELEGANCE. THERE IS CHARACTER IN ITS DESIGN FOR PRIVATE SERVICE, AND FOR CONVENIENCE, ELEGANT APPOINTMENTS AND SATISFACTORY SERVICE, IS WORTHY OF MOST CAREFUL EXAMINATION.

### **Baker Coupé**

- WHEEL BASE—92½ inches.  
WHEEL TREAD—56 inches.  
WHEELS—Artillery, 36 inches.  
TIRES, SIZE—36 x 3½ inches front, 36 x 4½ inches rear.  
TIRES—Pneumatic, optional standard American clincher tires.  
STEERING GEAR—Side lever.  
BRAKES—Two internal brakes on rear axle operated by foot lever, one internal brake on transmission shaft operated by controller lever.  
SPRINGS—Semi-elliptic front and rear.  
BATTERIES—28 cells, 9 P V.  
MOTOR—2½ horse-power, 300 per cent. overload capacity.  
TRANSMISSION—Silent chain reduction, shaft and bevel gear drive.  
EFFICIENCY—Highest obtainable by the use of ball bearings in all revolving parts.  
MILEAGE CAPACITY—40 miles on a single charge of the battery.  
PAINTING—Body, black; green, blue or maroon panels; wheels to match, with striping.  
TRIMMING—Green, blue or maroon broadcloth.  
WEIGHT—2,400 pounds.  
PRICE—\$3,000, f. o b. Cleveland, Ohio.

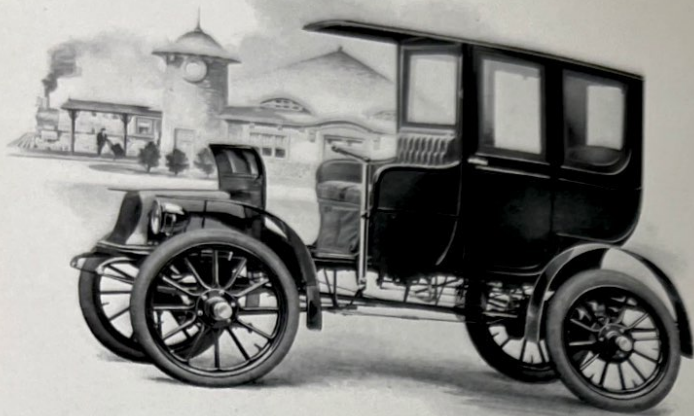


**Baker Victoria**

A LUXURIOUS, SPACIOUS, ELEGANT RIDING CARRIAGE FOR THE AVENUE, SHOPPING PURPOSES OR PARK RIDING; SUPERB IN EVERY DETAIL OF FINISH AND FITTINGS; A PERFECT PRIVATE CARRIAGE FOR USE AT SUMMER RESORTS. IT IS NOISELESS, ODORLESS AND FREE FROM LUBRICANTS.

**Baker Victoria**

- WHEEL BASE—80½ inches.
- WHEEL TREAD—58 inches centers.
- TIRES, SIZE—30 x 3½ inches front, 36 x 4½ inches rear.
- TIRES—Pneumatic, optional standard American clincher tires.
- STEERING GEAR—Side lever.
- BRAKES—Two internal brakes on rear axle operated by foot lever, one internal brake on transmission shaft operated by controller lever.
- SPRINGS—Semi-elliptic front and rear.
- BATTERIES—28 cells, 9 P V.
- MOTOR—2¼ horse-power, 300 per cent. overload capacity.
- TRANSMISSION—Planetary gear reduction, shaft and bevel gear drive.
- EFFICIENCY—Highest obtainable by use of ball bearings in all revolving parts.
- MILEAGE CAPACITY—40 miles on single charge of battery.
- PAINTING—Body, black; green, blue or maroon panels.
- TRIMMING—Green, blue or maroon broadcloth.
- WEIGHT—2,400 pounds.
- PRICE—\$3,000.

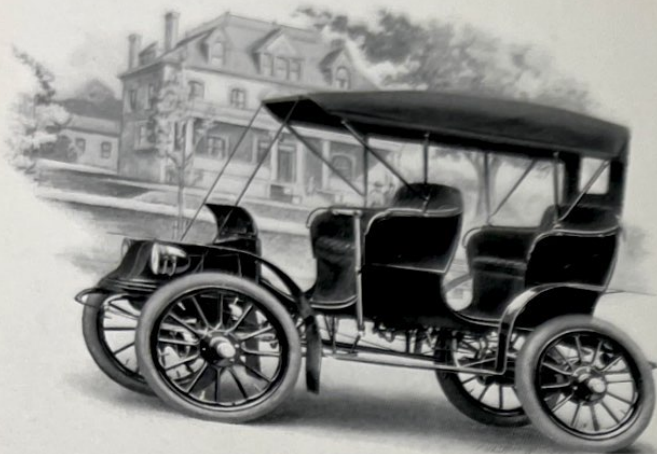


**Baker Depot Carriage**

A POPULAR VEHICLE WHICH, WHEN COMPLETELY ENCLOSED, ANSWERS EVERY PURPOSE OF THE COUPÉ. THE FRONT PARTITION IS REMOVABLE AND ALL THE WINDOWS CAN BE LOWERED, AND WITH A SET OF LAZY BACK SEATS, WHICH ARE FURNISHED WITHOUT EXTRA CHARGE, THIS VEHICLE IS CONVERTIBLE TO AN IDEAL FAMILY CARRIAGE FOR FOUR PERSONS FOR SUMMER USE.

**Baker Depot Carriage**

- WHEEL BASE—92½ inches.
- WHEEL TREAD—56 inches.
- WHEELS—Artillery, 36 inches.
- TIRES, SIZE—36 x 3½ inches front, 36 x 4½ inches rear.
- TIRES—Pneumatic, optional standard American clincher tires.
- STEERING GEAR—Side lever.
- BRAKES—Two internal brakes on rear axle operated by foot lever, one internal brake on transmission shaft operated by controller lever.
- SPRINGS—Semi-elliptic front and rear.
- BATTERIES—28 cells, 9 P V.
- MOTOR—2½ horse-power, 300 per cent. overload capacity.
- TRANSMISSION—Silent chain reduction, shaft and bevel gear drive.
- EFFICIENCY—Highest obtainable by use of ball bearings in all revolving parts.
- MILEAGE CAPACITY—40 miles on a single charge of the battery.
- PAINTING—Body, black; green or blue panels. Wheels to match with striping.
- TRIMMING—Green or blue broadcloth.
- WEIGHT—2,400 pounds.
- PRICE—\$3,000.



**Baker Surrey**

DIGNIFIED, DISTINCTIVE AND COMFORT-  
 ABLE, EASY OF ACCESS, BROAD SEATS.  
 ITS CAPE TOP AFFORDS PROTECTION  
 FROM THE SUN'S RAYS WITHOUT OB-  
 SCURING THE VIEW. IN STORMY  
 WEATHER IT MAY BE QUICKLY CON-  
 VERTED INTO AN ENCLOSED VEHICLE.

**Baker Surrey**

WHEEL BASE—80½ inches.  
 WHEEL TREAD—38 inches.  
 WHEELS—Artillery, 38 inches.  
 TIRES, SIZE—36 x 3½ inches front, 36 x 4 inches rear.  
 TIRES—Pneumatic, optional standard American  
 clincher tires.  
 STEERING GEAR—Side lever.  
 BRAKES—Two internal brakes on rear axle oper-  
 ated by foot lever, one internal brake on  
 transmission shaft operated by controller  
 lever.  
 SPRINGS—Semi-elliptic front and rear.  
 BATTERIES—28 cells, 9 P V.  
 MOTOR—2½ horse-power, 300 per cent. overload  
 capacity.  
 TRANSMISSION—Silent chain reduction, shaft and  
 bevel gear drive.  
 EFFICIENCY—Highest obtainable by the use of ball  
 bearings in all revolving parts.  
 MILEAGE CAPACITY—40 miles on a single charge  
 of the battery.  
 PAINTING—Black, green or blue panels, wheels to  
 match with striping.  
 TRIMMING—Green or blue broadcloth.  
 WEIGHT—2,250 pounds.  
 PRICE—\$2,650, with top.



**Baker Suburban**

THE NAME IMPLIES ITS MISSION. THIS IS AN IDEAL CARRIAGE FOR COUNTRY CLUB SERVICE AND FOR THE GENTLEMAN WITH THE SUBURBAN HOME—A REAL COMPANION OF THE HIGH-POWERED CAR. ALWAYS READY. CLEAN. SERVICEABLE AND SAFE.

**Baker Suburban**

WHEEL BASE—32 inches.  
WHEEL TREAD—31 inches.  
WHEELS—Artillery, 31 inches.  
TIRES, SIZE—31 x 4 1/2 inches front, 31 x 4 inches rear.  
TIRES—Pneumatic, optional standard American clincher tires.  
STEERING GEAR—Side lever.  
BRAKES—Two internal brakes on rear axle operated by foot lever, one internal brake on transmission shaft operated by controller lever.  
SPRINGS—Semi-elliptic front and rear.  
BATTERIES—8 cells, 11 P V.  
MOTOR—2 1/2 horse-power, 300 per cent. overload capacity.  
TRANSMISSION—Planetary gear reduction, shaft and bevel gear drive.  
EFFICIENCY—Highest obtainable by use of ball bearings in all revolving parts.  
MILEAGE CAPACITY—50 miles on single charge of battery.  
TOP—Open or Victoria.  
PAINTING—Body, black or silver gray; gear, green or red.  
TRIMMING—Leather.  
WEIGHT—1,850 pounds.  
PRICE—\$2,000.



**Baker Stanhope**

THE GROWING INDEPENDENCE OF WOMAN IS EMPHASIZED IN HER MANIPULATION OF THIS CARRIAGE. THE CONTROL IS SIMPLICITY ITSELF. THERE ARE MORE WOMEN DRIVERS OF BAKER STANHOPE IN THIS COUNTRY THAN OF ANY OTHER AUTOMOBILE MADE.

### **Baker Stanhope**

WHEELS—32 inch diameter.

WHEELS—32 inch diameter.

WHEELS—32 inch diameter.

WHEELS—32 inch diameter.

WHEELS—32 inch diameter.

WHEELS—32 inch diameter.

WHEELS—32 inch diameter.

BATTERY—Full capacity.

BATTERY—Full capacity.

MOTOR—Multi-pole type will stand any load the battery will furnish without injury.

CONTROLLER—Non-sparking, three speeds forward and backward alike in efficiency.

TRANSMISSION—Single chain drive.

MILEAGE CAPACITY—20 miles on single charge of battery.

PAINTING—Black body with green or blue panels.

TRIMMING—Green or blue broadcloth.

WEIGHT—1,100 pounds.

PRICE—\$1,000.



**Baker Imperial**

THE EYE NEEDS NO INTERPRETER. THE REFINED ATTRACTIVENESS OF THIS CARRIAGE IS APPARENT. THEN ITS RELIABILITY AND WEARING QUALITIES HAVE BEEN DEMONSTRATED FOR THE PAST SIX YEARS.

**Baker Imperial**

WHEEL BASE—68 inches.

WHEEL TREAD—48½ inches.

WHEEL DIMENSION—30 inches.

TIRES, SIZE—30 x 3½ inches.

TIRES—Palmer.

STEERING GEAR—Side lever.

BRAKES—Two brakes, one operated by the controller lever handle which shuts off power and applies brake at the same time; the other a foot brake on floor of carriage, a powerful friction acting on rear axle.

SPRINGS—Full elliptic.

BATTERY—14 cells, 9 M V.

MOTOR—Multi-polar type, will stand any load the battery will furnish without injury.

CONTROLLER—Non-sparking, three speeds forward and backward alike in efficiency.

TRANSMISSION—Single chain drive.

MILEAGE CAPACITY—50 miles on single charge of battery.

PAINTING—Black body, with blue or green panels.

TRIMMING—Blue or green broadcloth or leather.

TOP—Open.

WEIGHT—1,050 pounds.

PRICE—\$1,200.



## Baker Electrics

**I**NSTRUCTIONS for running a Baker Electric Carriage are sent with each vehicle shipped. They are simple and require no mechanical knowledge or electrical experience. They can be learned in a very short time. The manipulation of a Baker is so simple that no one need fear to undertake it. The control is absolute even with the driver of slight experience. Practice makes one proficient and it is wonderful what can be done with the Baker Electrics.

Don't decide to purchase any electric car because it is advertised to do some wonderful stunt even if it is guaranteed. We are among the oldest electric carriage manufacturers in this country. We rank with the most successful and lead in fine finish and efficiency. We are responsible, we have ripe experience, and unhesitatingly assure the intending purchaser that whatever any other electric carriage will perform, we can duplicate and even excel either in mileage or speed, and as for durable qualities, no car has stood the test of time better than the Baker. Bakers are at once a luxury and a utility. They have taken a place with the people that have used them as indispensable. They have earned a reputation that stands for superiority. The name Baker is synonymous with quality.

## National Association of Automobile Manufacturers

### Standard Warranty

Adopted August 12th, 1902

**W**E WARRANT all goods furnished by us for sixty days following the date of their shipment, based upon the date of invoice covering the goods, this warranty being limited to the replacement in our factory of all parts giving out under normal service in consequence of defect of material or of workmanship.

If the circumstances do not permit that the work shall be executed in our factory, this warranty is limited to the shipment, without charge, of the parts intended to replace those acknowledged to be defective.

It is, however, understood that we make no warranty whatever regarding pneumatic tires or the batteries.

We cannot accept any responsibility in connection with any of our motor cars when they have been altered or repaired outside of our factory.

We are not responsible to the purchaser of our goods for any undertakings and warranties made by our agents beyond those expressed above.

We wish it distinctly understood that we make no warranty of our goods except as stated above, but desire and expect that customers shall make a thorough examination of our goods before purchasing.

Should any breakage occur in a Baker at any time by reason of defective material, we will replace it free of charge when such parts are returned to us, freight prepaid, for our inspection.

Chasmar-Winchell Press New York and Pittsburgh