

Babcock  
ELECTRICS

# BABCOCK ELECTRICS

*"WHEN YOU BUILD RIGHT, IT  
IS RIGHT AND WORKS RIGHT"*



1907

BABCOCK ELECTRIC  
CARRIAGE COMPANY

BUFFALO, NEW YORK, U. S. A.

SEIDLER-MINER AUTOMOBILE CO.  
244 JEFFERSON AVE.  
DETROIT, MICH.



# Introduction



AFTER seven years of practical manufacturing experience, our line of Electric Automobiles — both for pleasure and business — is unsurpassed. The essential features — reliability, comfort, cleanliness, ease of operation, ample mileage, speed enough for enjoyment — are all perfectly and practically combined in the “Babcock Electrics” as in no other electric carriage or any other type of vehicle.

Mr. F. A. Babcock, President of the Company, was an experienced carriage builder long before he entered the electrical field. He understands not only substantial construction, but how to combine beauty with utility.

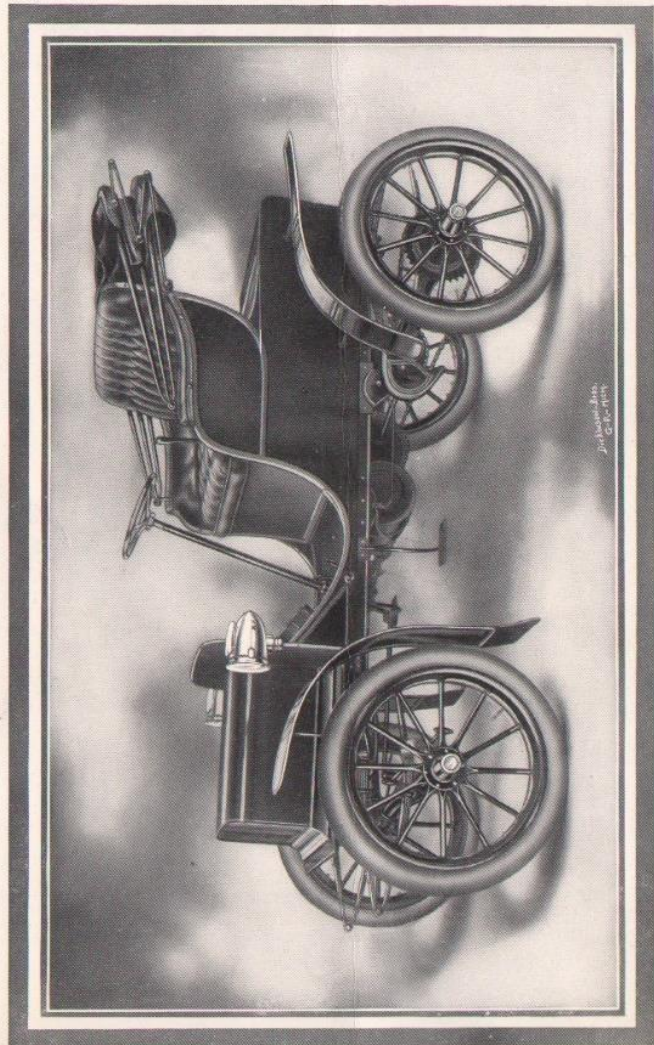
“When you build right, it *is* right and works right.” Babcock Electric Carriages are thoroughly right in design, material and construction, and combine the use of expert knowledge that makes the vehicle do the greatest amount of work in the most economical way, and do it the longest.

Babcock carriages represent the highest development of carriage-maker's art; not radical in appearance, but built along the lines of accepted types, with an added grace, luxurious style and fine finish that give them a distinguished touch — a mark of refined elegance.

This advanced type of electric vehicle gives more actual, dependable service, year in and year out, at less proportionate operating cost, than you can get from other electrics, or any other vehicles, with or without horses.

**Babcock Electric Carriage Company**





MODEL 5 ROADSTER. Price Complete, \$1,400.00

## Model 5 Roadster

"Long Distance — High Speed"

PRICE COMPLETE, \$1,400

**T**HIS car is a radical departure from other types of electric vehicles. Owing to its high speed and mileage, it is well adapted for business purposes as well as pleasure. This model can show a speed of 30 miles per hour for short spurts. The regular running speed is from 13 to 18 miles per hour, and when properly operated over good, *level* Macadam roads, should give 75 to 85 miles on one charge.

We use the celebrated Palmer Plank Road tires in order to obtain the very high speeds and mileage. Any other tire will reduce the speed and mileage very materially, as every bicycle rider well knows.

A regularly equipped stock car of this type recently made the famous trip from New York to Philadelphia (100 miles) on one charge.

### NOTABLE FEATURES

Very light weight — about 1,500 pounds — and has more speed and goes farther on one charge than any other type of electric vehicle.

Long wheel base (78 inches) which, with a spring suspension of one-half platform in front, full elliptic in rear and battery divided (half in front and half in rear), makes a perfect riding vehicle under all conditions.

**TIRES.** 32 x 3½ inches, Palmer.

**WHEELS.** 32 inches front and back.

**WHEEL STEER** set at a very comfortable angle and breaking with a universal joint to allow of getting in or out on the operator's side with comfort.

**CHASSIS.** Wood, reinforced with steel plates. (Our own design).

**BATTERY.** 24 cells of our *own* make, so placed as to be accessible without removing from body; 12 cells in front under hood and 12 cells under back of body.

**MOTOR.** 1½ H. P. (normal), with 300 per cent overload capacity. Is suspended from chassis under seat.

**DRIVING GEAR** (double chain) is so constructed as to be very flexible and noiseless (no whirring), and starts smoothly.

**BRAKES.** Powerful expanding brakes in hub of both rear wheels and auxiliary brake on motor counter-shaft.

**CONTROLLER.** Our own design, with four forward speeds and the same reverse, in addition to which there is an accelerator lever which increases each one of these four speeds.

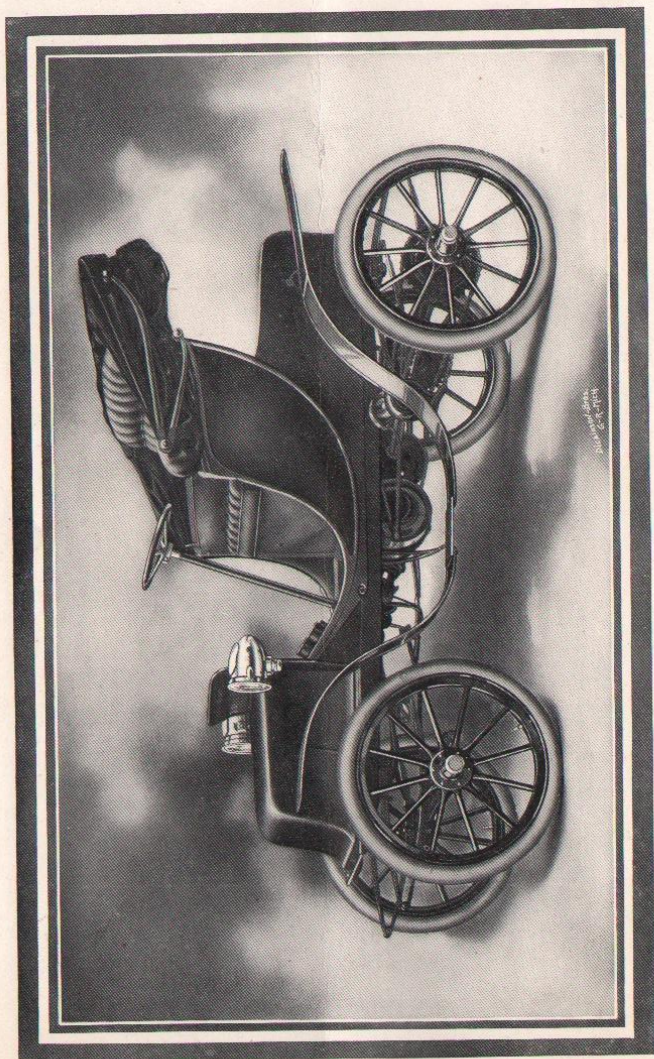
**RANGE OF SPEED.** 6 to 30 miles per hour.

**UPHOLSTERED** in leather or cloth and painted to match.

**TOP.** Leather, with side curtains and storm apron of rubber.

All necessary tool equipment included.





MODEL 6 VICTORIA PHAETON. Price Complete, \$1,600.00.

## Model 6 Victoria Phaeton

"Long Distance — Extreme Comfort"

PRICE COMPLETE, \$1,600

### NOTABLE FEATURES

While this Model has the same chassis as Model 5, we have made a much more luxurious vehicle of this, sparing nothing in the way of expense, both in design and finish. It has, like Model 5, a very large mileage radius and high speeds.

The body is of the Victoria type, with full Victoria top, and upholstered in either blue or green broadcloth. Also continuous leather fenders.

The battery is somewhat larger in this car than in Model 5, and being somewhat heavier it takes a little more amperage to run it.

TIRES. 32 x 3 inches. Standard Clincher.

WHEELS. 32 inches front and back.

DRIVING GEAR is a double chain, same as in Model 5, and is very flexible and noiseless.

BRAKES. Same as Model 5.

RANGE OF SPEED. 6 to 25 miles per hour.

UPHOLSTERED in either blue or green cloth. Painted to match.

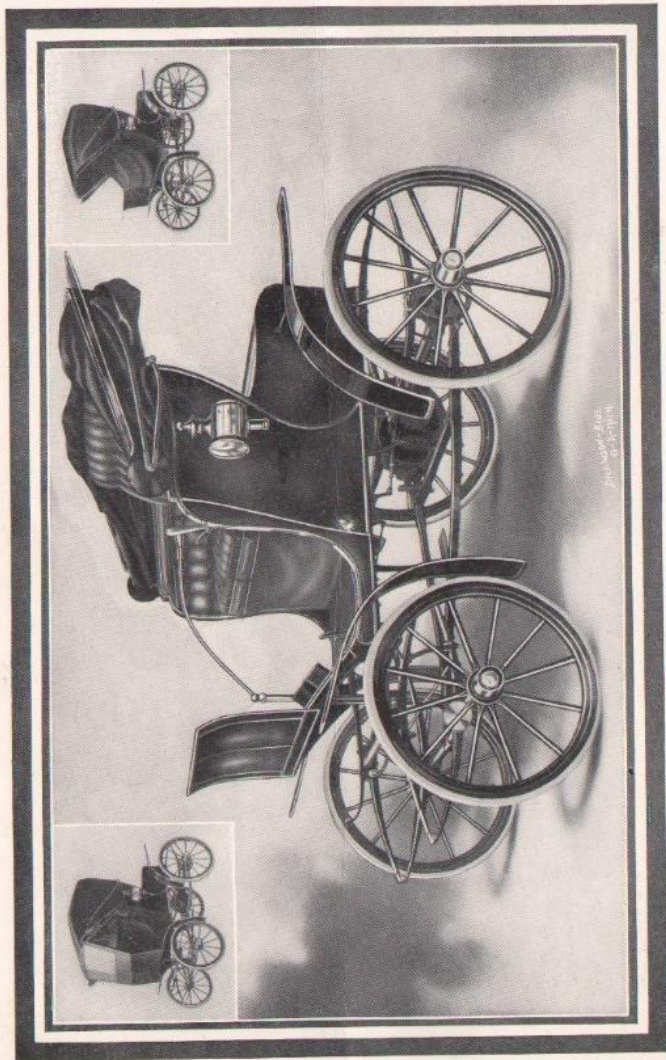
TOP. Best quality of H. B. Leather.

WEIGHT. About 1,600 pounds.

MOTOR AND CONTROLLER. Same as in Model 5.

SEIDLER-MINER AUTOMOBILE CO.  
AGENTS  
244 JEFFERSON AVE.  
DETROIT, MICH.





MODEL 1 STANHOPE (Design Patented). Price Complete, \$1,650.00.

## Model 1 Stanhope

(DESIGN PATENTED)

"Simplicity — Utility"

PRICE, \$1,650

**T**HIS is the standard of electric vehicles as relates to beauty of design, luxurious appearance and efficiency, and is exceptionally well built to stand everyday use at a minimum cost for maintenance. It has a large roomy seat, and can accommodate three persons if desired.

### DESCRIPTION

**UPHOLSTERING.** Either blue or green cloth of highest grade. Victoria top of finest H. B. leather.

**PAINTING.** Blue or green.

**WHEELS.** Sweet's patent concealed band. 32 inches front; 36 inches back.

Equipped with solid tires, 1 3/4 inches front, 2 inches back, of the best rubber obtainable; and hung on four elliptic springs, it makes a very easy riding car over all conditions of roads.

**AXLES.** Front, solid forging; rear, solid special rolled steel.

**MOTOR.** 3 H. P. Will stand 300 per cent. overload and capable of climbing 28 per cent. grade.

**BEARINGS.** Ball bearings in front; roller bearings in back.

**BRAKES.** Electric brake operated by the controller handle, and powerful double-acting band brake operated by foot lever.

**CONTROLLER.** Has three forward and two reverse speeds. Has, in addition, an accelerator which increases each one of these speeds (forward and reverse), the highest speed being 18 miles per hour.

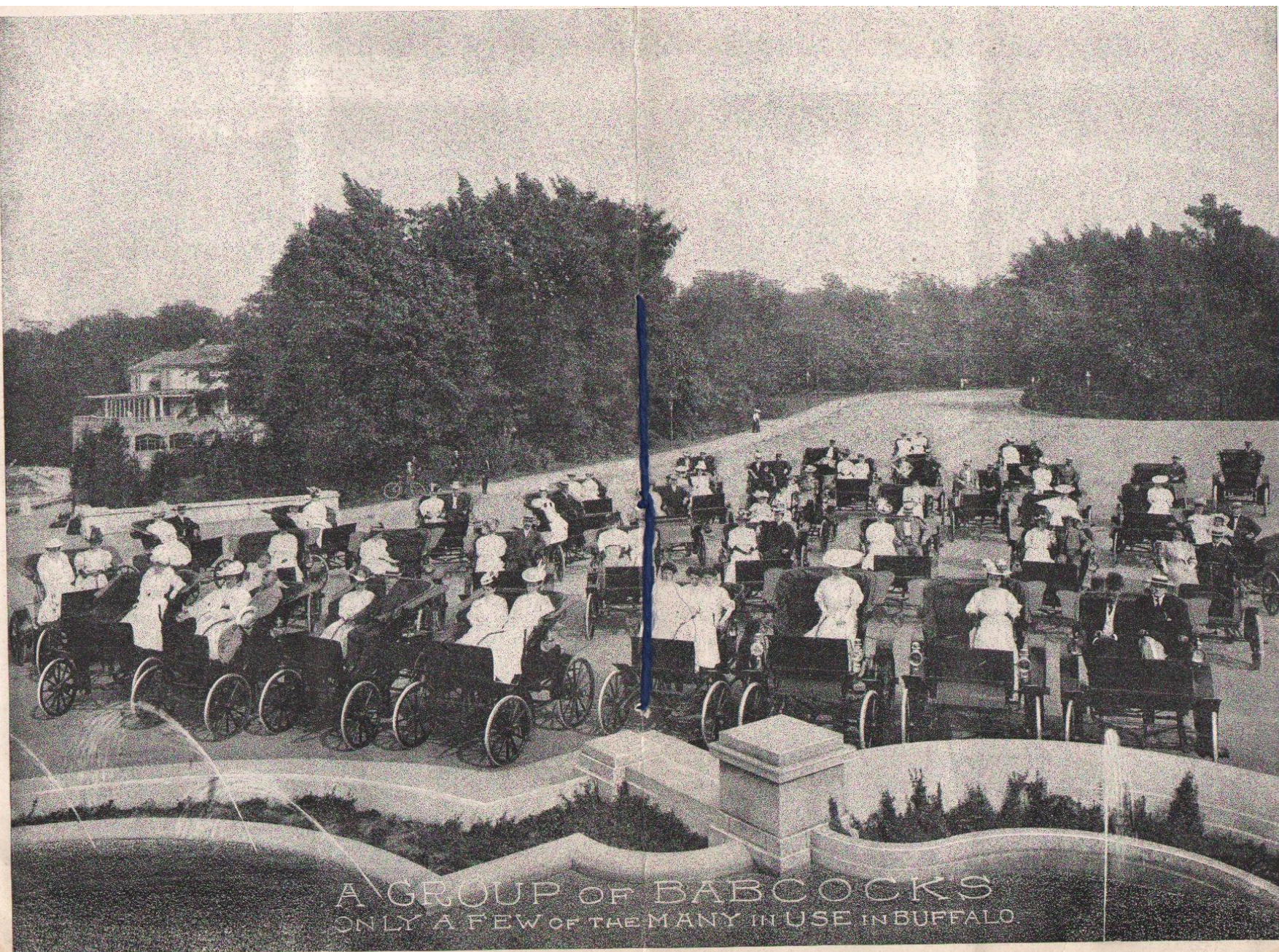
**BATTERY.** 40 cells of our own make, and has a capacity of 50 miles over average level roads.

**EQUIPMENT.** Volt and Ammeter, Storm Apron, Driver's Cushion, two Running Plugs, Charging Plug, four Wrenches.

The miniature cut (to the left) shows the Stanhope equipped with storm front and sides, thereby insuring absolute protection from winter weather conditions, and at the same time a clear view of the road can be had through the celluloid windows. When not in use can be entirely removed or rolled up in front, and does not interfere with dropping the top.

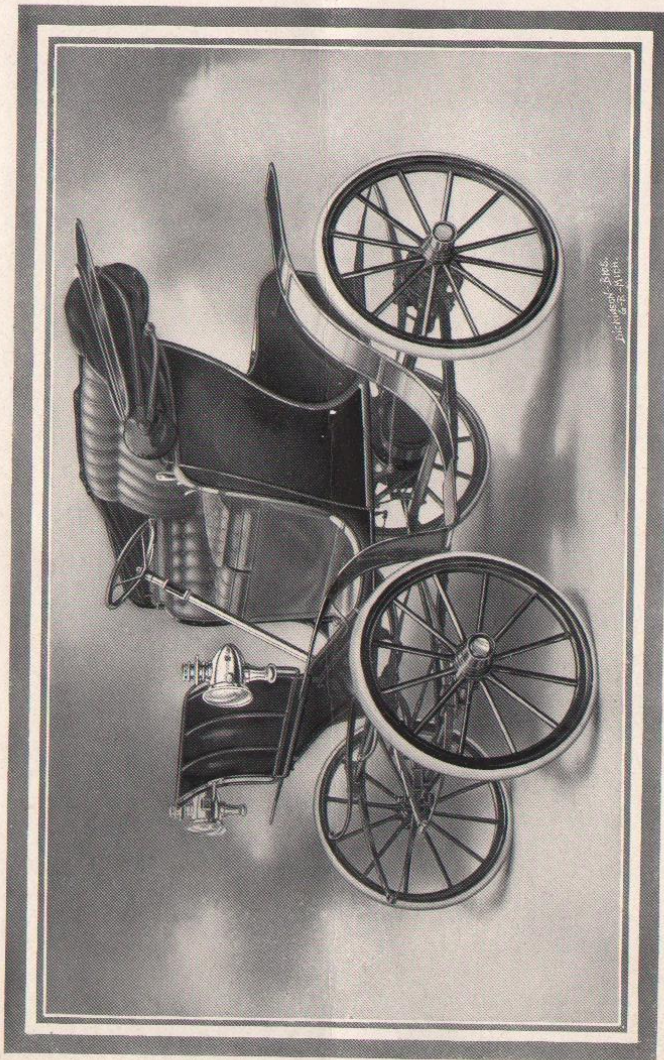
The other cut (to the right) shows the Stanhope with top up and storm apron without celluloid front, which is very desirable for unfavorable weather during the summer months.





A GROUP OF BABCOCKS  
ONLY A FEW OF THE MANY IN USE IN BUFFALO.





Patented Dec. 21, 1910.

MODEL NO. 1 (SPECIAL). Price Complete, \$1,800.00

## Model 1 Special

(DESIGN PATENTED)

"Dignity and Stability"

PRICE, \$1,800

We have endeavored in this model to produce the most luxurious vehicle possible in the way of a Stanhope type, and believe we have succeeded. It has the dignity and substantial elegance rarely found in a carriage of this type.

The car hangs very low, so as to make it easy to get in and out of. Has long, continuous mud guards, completely protecting one's clothes either in entering or getting out.

Our new device for tilting wheels removes the only objection to their use, and insures safety that the hand-lever does not possess.

In battery and motor equipment, this model is the same as Model 1.

It has long wheel base (66 inches), thereby insuring very easy riding.

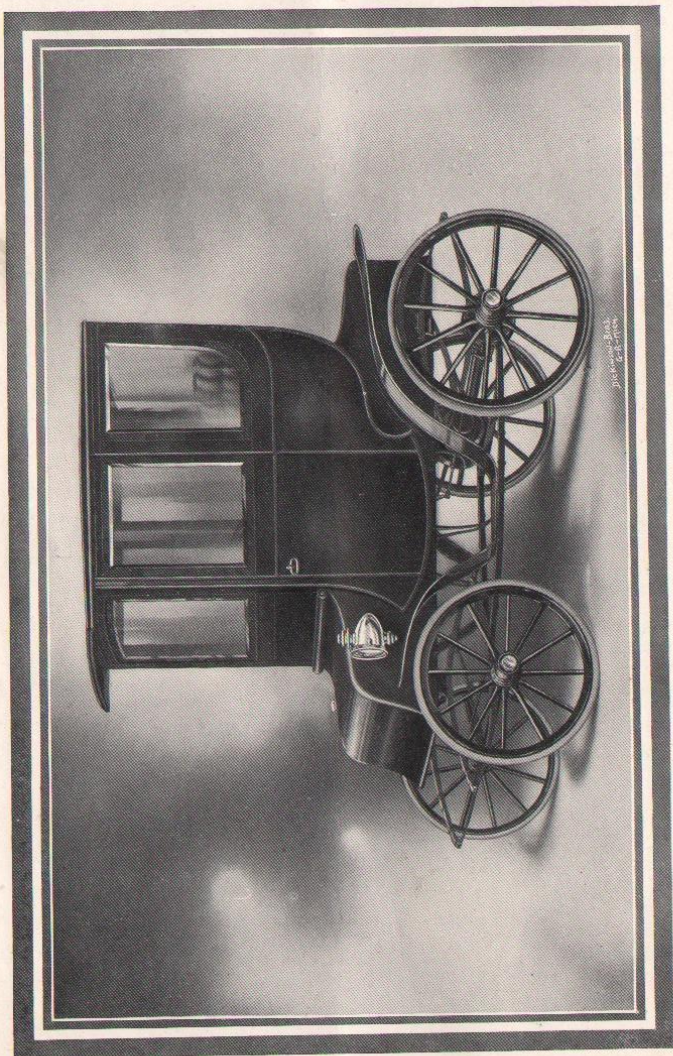
The lamps, of solid brass, are mounted on the dasher giving it a very imposing appearance.

We will furnish either solid or standard clincher tires (whichever preferred) without additional cost.

UPHOLSTERING. Blue or green cloth, as desired. Painting to match. All other features not enumerated are the same as in Model 1 Stanhope.

EQUIPMENT. Volt and Ammeter, Storm Apron, Driver's Cushion, two Running Plugs, one Charging plug, four Wrenches.





MODEL 8 COUPE. Price, \$2,500.00

## Model 8 Coupé

"Complete Protection"

PRICE, \$2,500

**T**HIS model recommends itself for a bad weather vehicle, giving that degree of luxury and comfort found in its counterpart—the horse-drawn coupe. In pleasant weather windows can be dropped, making a semi-enclosed vehicle. It is hung very low, and has broad steps making it easy to get in and out of. The ideal vehicle for stormy weather, going to the theatre or to be used for calling. It has a tilting wheel steer, with universal joint (our own design) so one can readily get out or in from either side.

### DESCRIPTION

**UPHOLSTERING.** Either blue or green cloth of highest quality. Painting to match.

**AXLES.** Solid, hand-forged front,  $1\frac{1}{4}$  inches. Rear axle is special rolled steel,  $1\frac{3}{4}$  inches in diameter.

**BEARINGS.** Front are of the standard annular type; back are of the roller type.

**MOTOR.** 3 H. P. Will stand readily 300 per cent. overload, and is capable of climbing a 28 per cent. grade.

**CONTROLLER.** 3 forward and 2 reverse speeds. Has, in addition, an accelerator which increases each of the speeds (forward and reverse), the highest speed being 18 miles per hour.

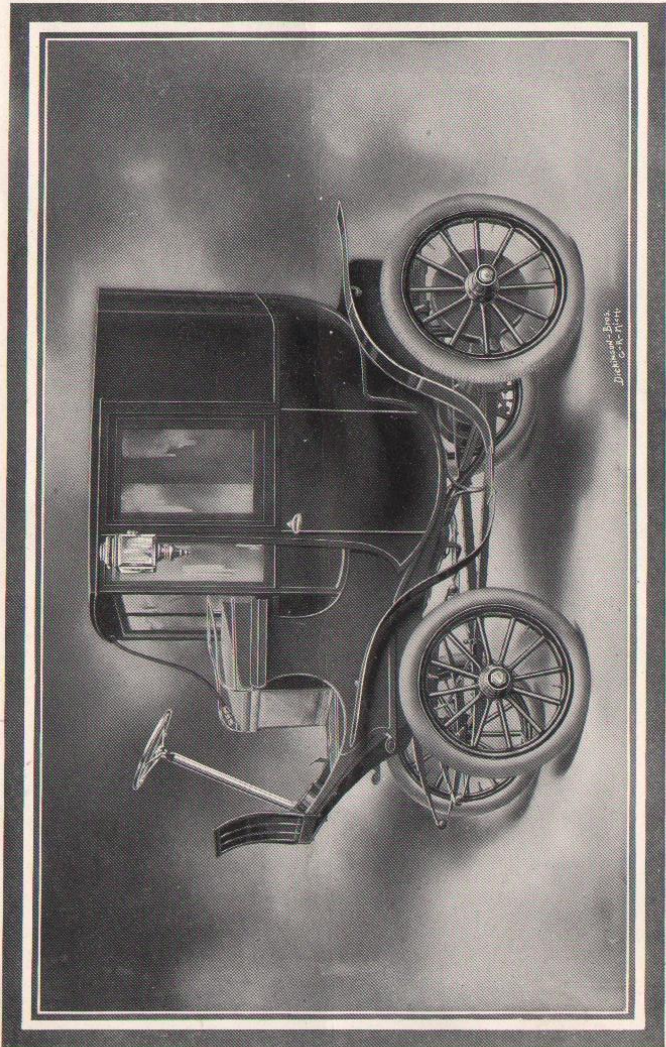
**TIRES.** Either solid or pneumatic, as preferred. 3 inches front;  $3\frac{1}{2}$  inches back.

**WHEELS.** Sweet's patent concealed band. 32 inches front; 36 inches back.

**BATTERY.** Our own make, and of very high mileage capacity. Divided half in front and half in rear, and on good level roads has a capacity of easily 50 miles on one charge.

**EQUIPMENT.** Volt and Ammeter, two Running Plugs, Charging plug, four Wrenches.





MODEL 7 BROUGHAM. Price, \$4,000.00

## Model 7 Brougham

"Refinement — Luxury"

PRICE, \$4,000

**T**HE electric Brougham is the finishing touch to the automobile "stable," and fills the field of its horse-drawn prototype in such a superior manner that it is rapidly displacing the thoroughbred for this work. When considering how much easier it is to handle in a crowded thoroughfare (its greater speed and instant readiness for use), its utility is plainly evident.

While intended for two passenger service, has folding front seat holding two extra passengers, which can be used for emergency very comfortably. Beside, the front seat holds two people.

We have put into this Brougham all the ingenuity and experience of many years in the carriage business, with every thought for extreme comfort and fine appointments, which, together with our experience as electric automobile builders, we present as the finest product of its class.

### DESCRIPTION

**BATTERY.** 40 cells of our *own* make, distributed half in front and half in rear, and can be readily handled by one man *without* the need of a hydraulic lift, as is the case with underslung batteries. Has a capacity of over 50 miles on one charge on moderately level roads.

**MOTORS.** Two. 3 H. P. each, normal ; 300 per cent. overload.

**WHEEL STEER** is operated from the right side, and has universal joint, so the driver can readily get in or out from either side.

**CONTROLLER.** Our own design. Operated by handle under steering wheel. Four speeds forward ; same reverse. Speed 8 to 18 miles per hour.

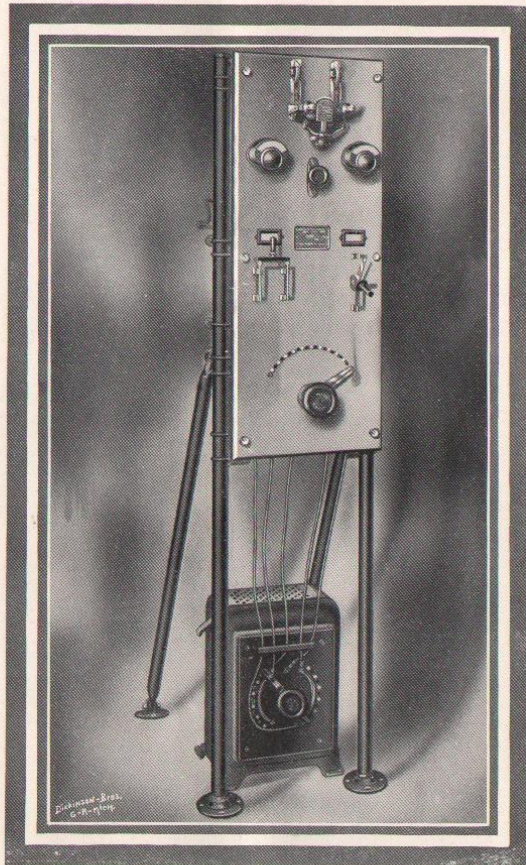
**WHEELS.** Our own construction, and are fitted with Standard pneumatic tires. 32 x 3½ inches front ; 36 x 4 inches back, being higher than used by other makers, insuring greater comfort in riding over rough or uneven streets.

**BRAKES.** Powerful internal brakes in rear hubs, also electric brake operated by controller handle.

**FOOT LEVER.** Operated in similar manner to gasoline car clutch lever ; cuts off power without removing controller handle, and is of great value in driving through crowded streets where stopping and starting is frequent.

Is fitted with electric annunciator, dome lights, card racks and speaking tube.





## Alternating Current Rectifier for Charging Storage Batteries

We can supply the apparatus shown above for charging any make of electric carriage, from an alternating current power line. This is the usual form of current found in most sections, and also the most efficient method of charging. With an outfit of this character installed in stable or private garage, the inconvenience of a central garage is done away with, and it can be operated by any inexperienced person. Prices on application.

## General Instructions

The commutator of motor should be cleaned at least ONCE each week. This is easily done by jacking up the back axle, opening cover of motor, and as axle is revolving slowly, apply a piece of very fine sandpaper to the commutator by pressing with the ends of one's fingers until it is bright. See also that the carbon brushes have a good contact.

The "nigh" hind wheel of Models 1, 1 Special and 8, are keyed on, and can only be taken off by a "puller" made for that purpose, which our agents have. The wheel CANNOT BE DRIVEN OFF.

The "off" hind wheel is taken off by means of the ordinary carriage wrench, but be sure in putting it back on to see that the brass sleeve is well oiled.

The front wheels run on ball bearings and require oiling about every six months. This applies to all the ball bearings. The back bearings are of the roller type, and should be oiled the same.

The brake on back axle is very powerful and is what is known as a double action band brake.

Always cover motor and gear case with a piece of rubber cloth when washing vehicle, otherwise water will get in bearings and cause harm.

If we receive an order from you, we will deliver a strictly first-class vehicle and a storage battery that is capable of doing all the miles we claim for it. You cannot injure the carriage easily, but you can the battery; hence, observe the following:

Don't OVERCHARGE—there is where great injury is easily done.

Charge EVERY DAY vehicle is used, and charge it FULL.

Be sure that *pure* acid is put in the cells; add always a little ONCE a week and know that the specific gravity in cells is 1285 when *fully* charged—no higher, no lower—(if higher, add pure water) and you will have a great deal of pleasure using a "Babcock Electric."

## Babcock Electric Carriage Company

F. A. Babcock, President



